

EASTPOINTE

FREE-STANDING BUILDING

Former Salon Studio



15301 E 8 Mile Road
Eastpointe, MI 48021



Retail Opportunity
2,695 ± SF

FOR LEASE

PROPERTY HIGHLIGHTS



Description

Prime leasing opportunity featuring approximately 2,695 ± SF of freestanding retail space positioned along highly traveled 8 Mile Road in the heart of Eastpointe, MI. Situated within a densely populated trade area, the property offers exceptional visibility, strong daily traffic counts, and prominent signage exposure ideal for a wide range of retail, medical, office, or service-oriented users.

Address

15301 E 8 Mile Road
Eastpointe, MI 48021

Features

- 2,695 ± SF Available
- Monument Signage Available
- Densely Populated
- Excellent Visibility
- Multiple Curb Cuts
- 9 Parking Spaces

Asking Rent

Contact Broker

Traffic Counts

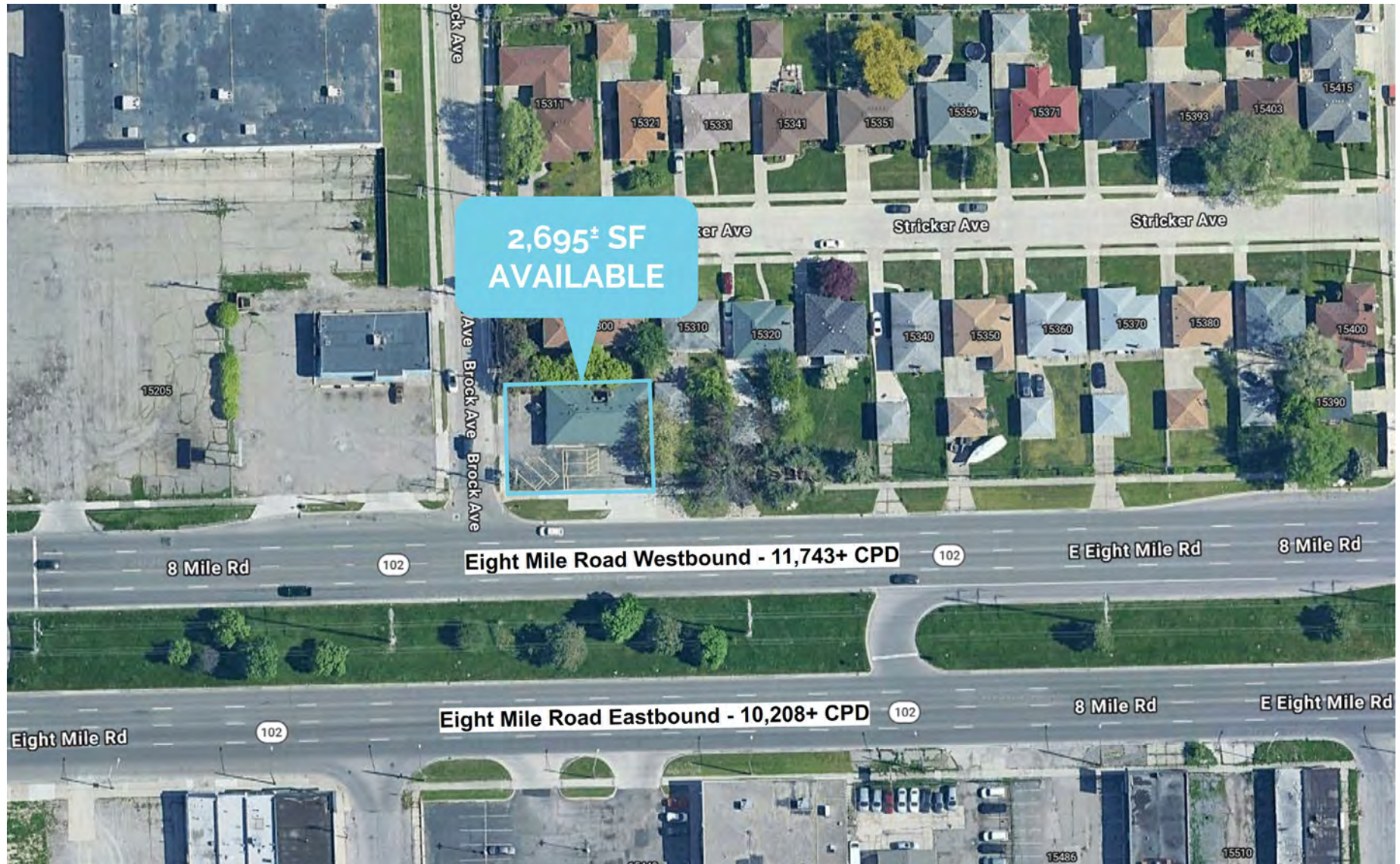
8 Mile Road Eastbound - 10,208+ cpd
8 Mile Road Westbound - 11,743+ cpd
Gratiot Ave Northeast - 10,351+ cpd
Gratiot Ave Southeast - 10,927+ cpd

Demographics

	1 MILE	3 MILES	5 MILES
POPULATION:	22,031	158,199	367,116
HOUSEHOLDS:	7,791	59,840	145,380
AVG. HOUSEHOLD INCOME:	\$70,650	\$69,910	\$85,405
DAYTIME POPULATION:	10,614	91,248	232,843

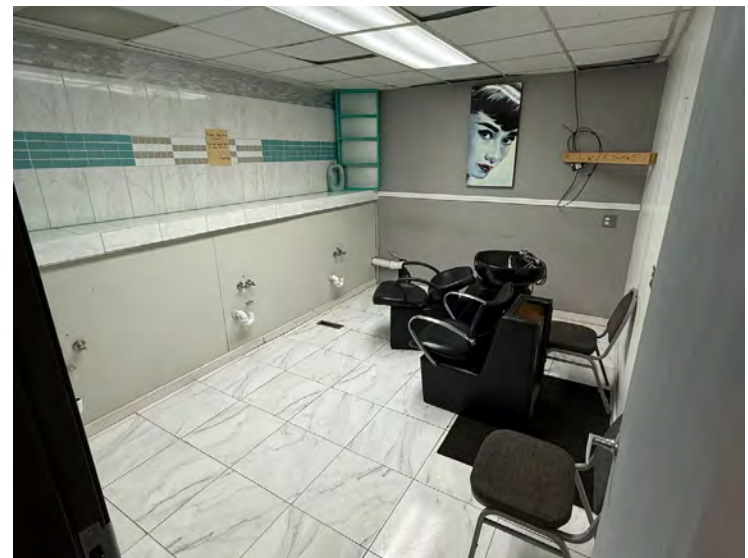
The information contained herein has been obtained through sources deemed reliable by On Q Commercial Real Estate but cannot be guaranteed for its accuracy. We recommend to the buyer or lessee that any information, which is of special interest, should be obtained through independent verification. ALL MEASUREMENTS ARE APPROXIMATE.

MICRO AERIAL



The information contained herein has been obtained through sources deemed reliable by On Q Commercial Real Estate but cannot be guaranteed for its accuracy. We recommend to the buyer or lessee that any information, which is of special interest, should be obtained through independent verification. ALL MEASUREMENTS ARE APPROXIMATE.

PHOTOS
EASTPOINTE FSB



The information contained herein has been obtained through sources deemed reliable by On Q Commercial Real Estate but cannot be guaranteed for its accuracy. We recommend to the buyer or lessee that any information, which is of special interest, should be obtained through independent verification. ALL MEASUREMENTS ARE APPROXIMATE.



OnQ
COMMERCIAL
REAL ESTATE

JOE QONJA

Principal Broker

C: (248) 977-7799

O: (248) 712-3300

E: joe@onqcre.com

LEO ALLUS

Associate

C: (248) 321-3325

O: (248) 712-3300

E: leo@onqcre.com

100 W. Long Lake Rd. Suite 122 Bloomfield Hills, MI 48304

www.onqcre.com

The information contained herein has been obtained through sources deemed reliable by On Q Commercial Real Estate but cannot be guaranteed for its accuracy. We recommend to the buyer or lessee that any information, which is of special interest, should be obtained through independent verification. ALL MEASUREMENTS ARE APPROXIMATE.