

ST CLAIR SHORES

Retail Plaza



26427 Harper Avenue
St Clair Shores, MI 48081



Retail Opportunity
4,600 ± SF

FOR LEASE

PROPERTY HIGHLIGHTS



Description

Take advantage of this exceptional leasing opportunity in the heart of St. Clair Shores. This space offers outstanding visibility and exposure in a densely populated, high-traffic corridor. This site is ideal for retail or service-oriented businesses looking to establish or expand their presence in a thriving community.

Address

26427 Harper Avenue
St Clair Shores, MI 48081

Asking Rent

Contact Broker

Features

- **4,600 ± SF Space Available**
- **Densely Populated**
- **Multiple Curb Cuts**
- **High-Traffic counts & Strong Residential Density in Immediate Area**

Traffic Counts

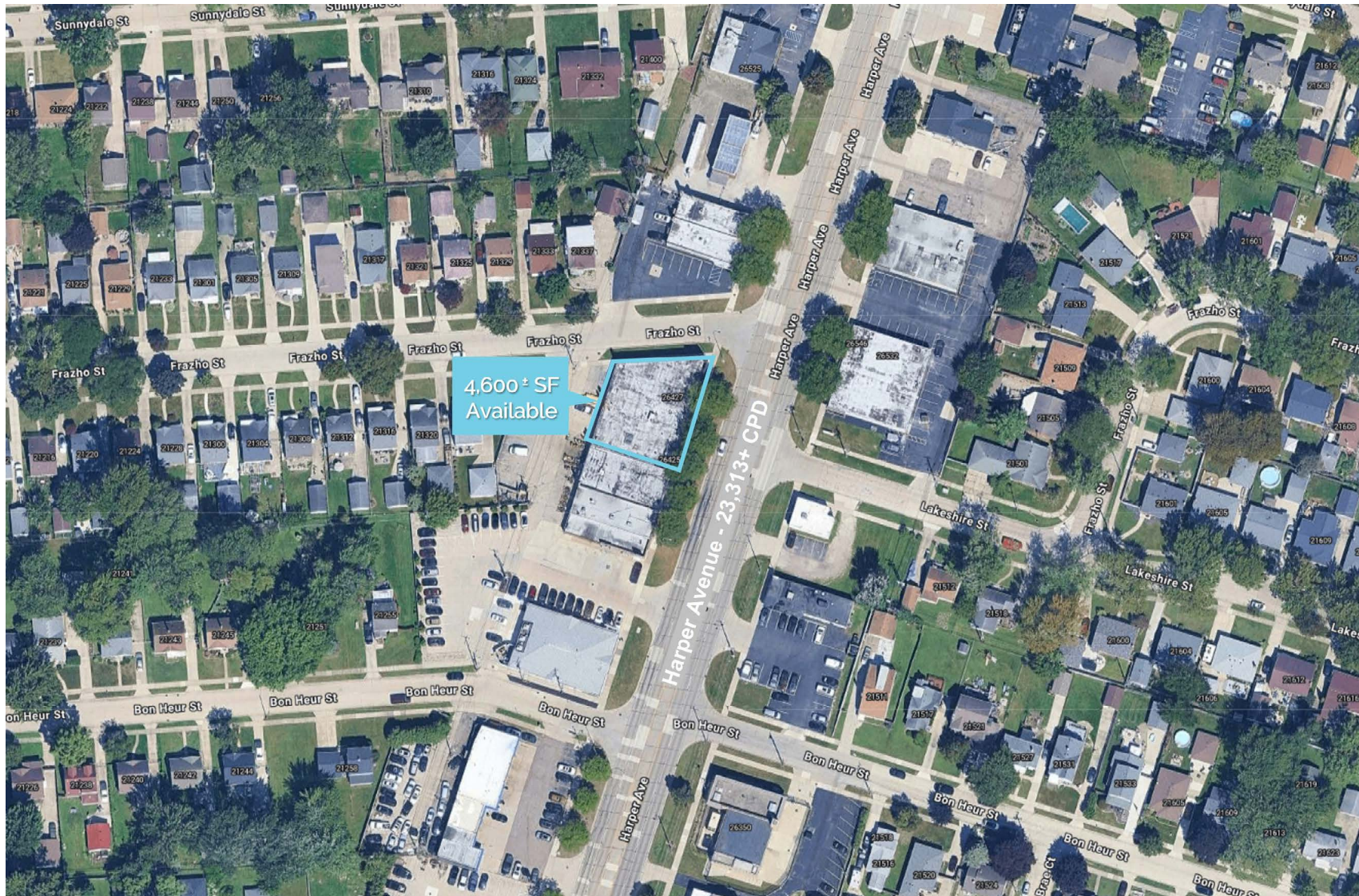
Harper Avenue - 23,313+ cpd
11 Mile Road - 17,009+ cpd
10 Mile Road - 21,477+ cpd

Demographics

	1 MILE	3 MILES	5 MILES
POPULATION:	15,422	107,172	250,409
HOUSEHOLDS:	6,944	47,408	105,614
AVG. HOUSEHOLD INCOME:	\$99,705	\$87,875	\$90,436
DAYTIME POPULATION:	8,760	59,043	149,953

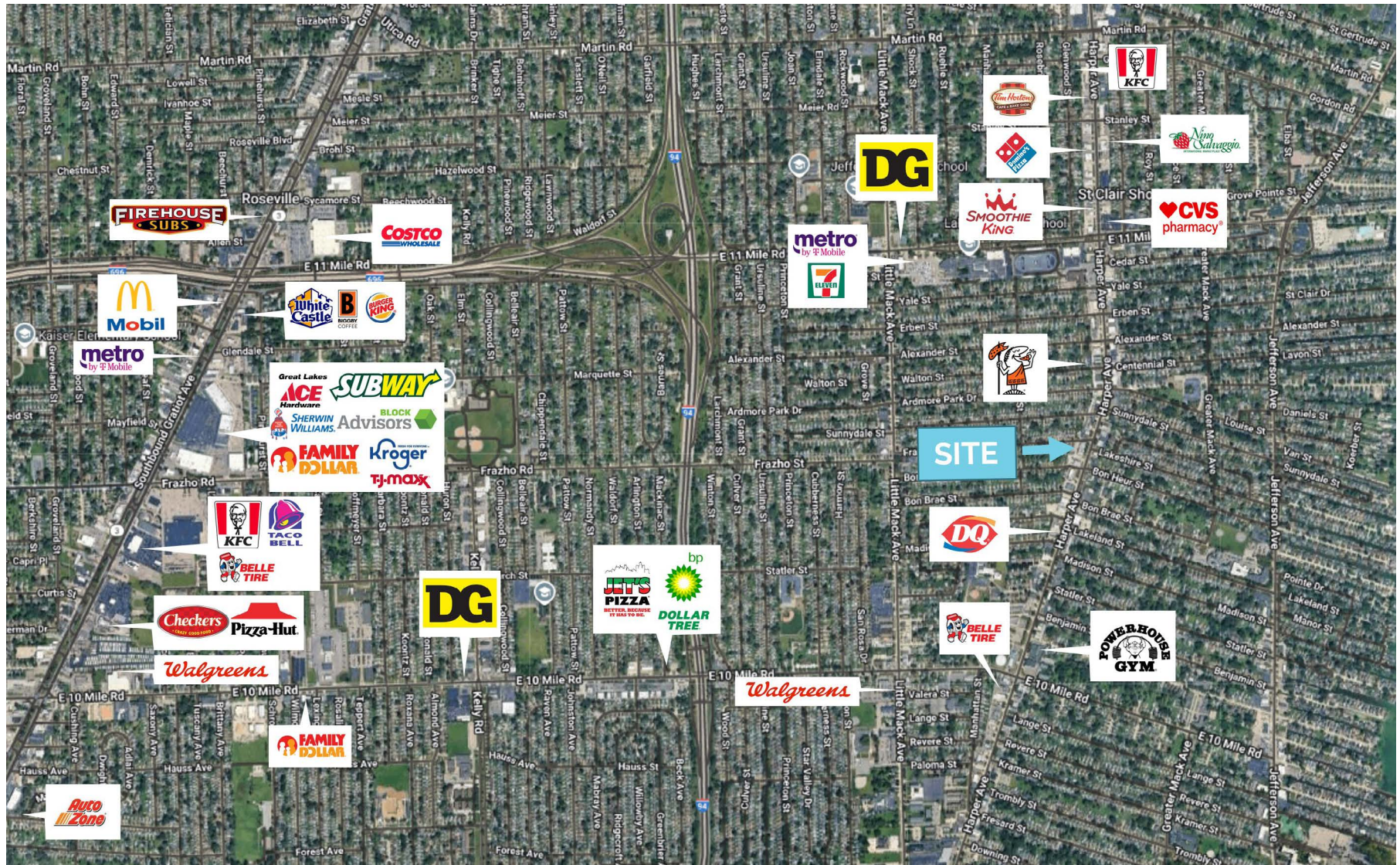
The information contained herein has been obtained through sources deemed reliable by On Q Commercial Real Estate but cannot be guaranteed for its accuracy. We recommend to the buyer or lessee that any information, which is of special interest, should be obtained through independent verification. ALL MEASUREMENTS ARE APPROXIMATE.

MICRO AERIAL



The information contained herein has been obtained through sources deemed reliable by On Q Commercial Real Estate but cannot be guaranteed for its accuracy. We recommend to the buyer or lessee that any information, which is of special interest, should be obtained through independent verification. ALL MEASUREMENTS ARE APPROXIMATE.

MACRO AERIAL



The information contained herein has been obtained through sources deemed reliable by On Q Commercial Real Estate but cannot be guaranteed for its accuracy. We recommend to the buyer or lessee that any information, which is of special interest, should be obtained through independent verification. ALL MEASUREMENTS ARE APPROXIMATE.

PHOTOS

ST CLAIR SHORES PLAZA



The information contained herein has been obtained through sources deemed reliable by On Q Commercial Real Estate but cannot be guaranteed for its accuracy. We recommend to the buyer or lessee that any information, which is of special interest, should be obtained through independent verification. ALL MEASUREMENTS ARE APPROXIMATE.



OnQ
COMMERCIAL
REAL ESTATE

JOE QONJA

Principal Broker

C: (248) 977-7799

O: (248) 712-3300

E: joe@onqcre.com

LEO ALLUS

Associate

C: (248) 321-3325

O: (248) 712-3300

E: leo@onqcre.com

100 W. Long Lake Rd. Suite 122 Bloomfield Hills, MI 48304

www.onqcre.com

The information contained herein has been obtained through sources deemed reliable by On Q Commercial Real Estate but cannot be guaranteed for its accuracy. We recommend to the buyer or lessee that any information, which is of special interest, should be obtained through independent verification. ALL MEASUREMENTS ARE APPROXIMATE.