

# FRANKLIN VILLAGE PLAZA



32716 & 32734 Franklin Road  
Franklin, MI 48025



**Retail Opportunity**  
*1,464 ± SF & 952 ± SF*

**FOR LEASE**

# PROPERTY HIGHLIGHTS



## Description

Situated in the heart of Franklin, a highly affluent and desirable area known for its charm and thriving community. The city of Franklin boasts a high-income population, making it an ideal location for businesses targeting affluent clientele.

## Address

32716 & 32734 Franklin Road  
Franklin, MI 48025

## Features

- 1,464 ± SF & 952 ± SF Retail Spaces Available
- Affluent Community
- Excellent Road Visibility
- 25 Parking Spaces Available
- Zoning - General Commercial

## Asking Rent

Contact Broker

## Traffic Counts

W. 14 Mile Rd - 5,430+ cpd  
Franklin Rd - 6,382+ cpd

## Demographics

	1 MILE	3 MILES	5 MILES
POPULATION:	4,124	53,886	172,065
HOUSEHOLDS:	1,553	23,430	71,641
AVG. HOUSEHOLD INCOME:	\$300,617	\$173,140	\$184,427
DAYTIME POPULATION:	2,334	66,652	204,929

The information contained herein has been obtained through sources deemed reliable by On Q Commercial Real Estate but cannot be guaranteed for its accuracy. We recommend to the buyer or lessee that any information, which is of special interest, should be obtained through independent verification. ALL MEASUREMENTS ARE APPROXIMATE.



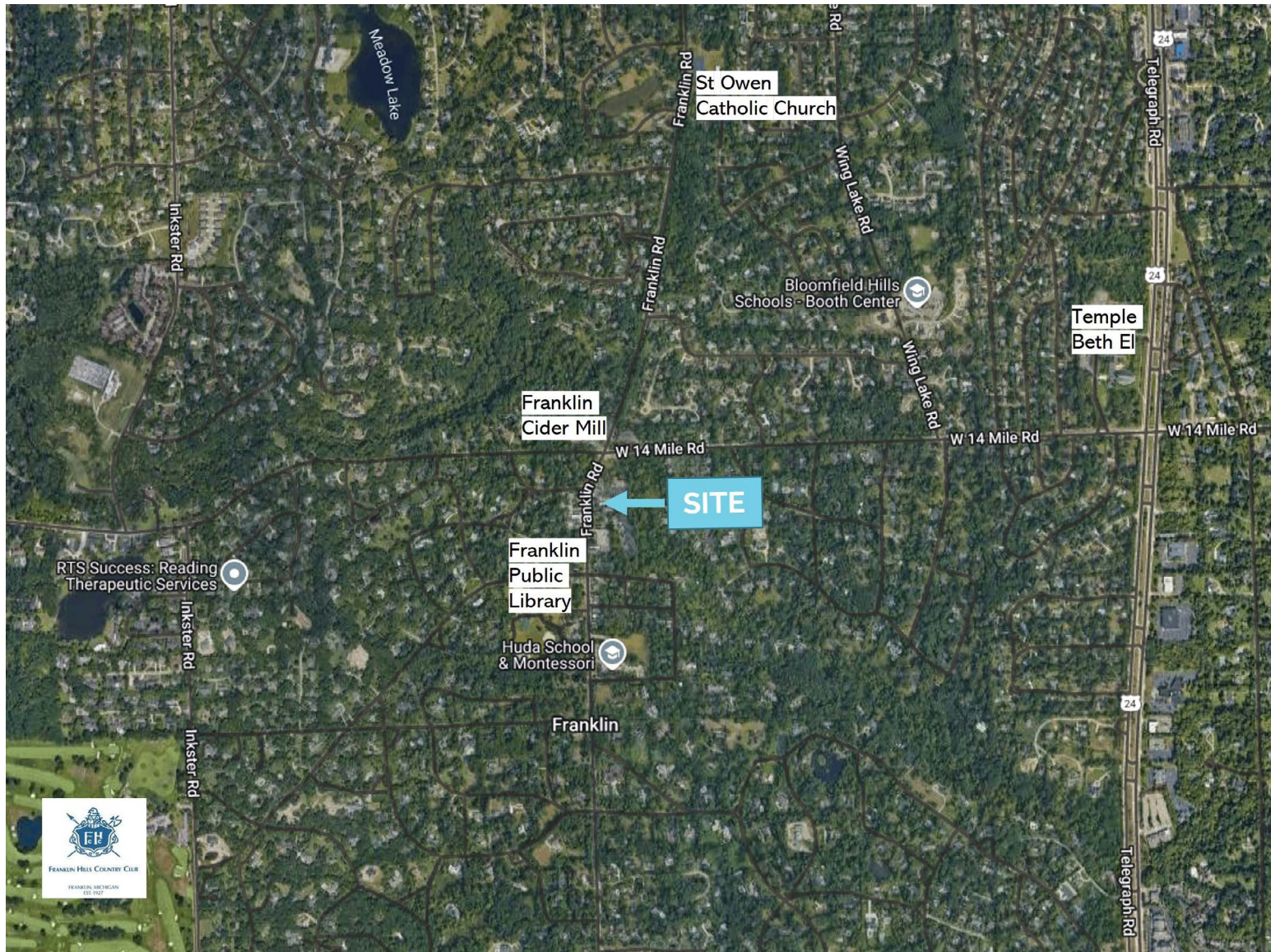
# MICRO AERIAL



The information contained herein has been obtained through sources deemed reliable by On Q Commercial Real Estate but cannot be guaranteed for its accuracy. We recommend to the buyer or lessee that any information, which is of special interest, should be obtained through independent verification. ALL MEASUREMENTS ARE APPROXIMATE.



# MACRO AERIAL



The information contained herein has been obtained through sources deemed reliable by On Q Commercial Real Estate but cannot be guaranteed for its accuracy. We recommend to the buyer or lessee that any information, which is of special interest, should be obtained through independent verification. ALL MEASUREMENTS ARE APPROXIMATE.



OnQ  
COMMERCIAL  
REAL ESTATE

**JOE QONJA**

Principal Broker

C: (248) 977-7799

O: (248) 712-3300

E: [joe@onqcre.com](mailto:joe@onqcre.com)

**LEO ALLUS**

Associate

C: (248) 321-3325

O: (248) 712-3300

E: [leo@onqcre.com](mailto:leo@onqcre.com)

100 W. Long Lake Rd. Suite 122 Bloomfield Hills, MI 48304

**[www.onqcre.com](http://www.onqcre.com)**

The information contained herein has been obtained through sources deemed reliable by On Q Commercial Real Estate but cannot be guaranteed for its accuracy. We recommend to the buyer or lessee that any information, which is of special interest, should be obtained through independent verification. ALL MEASUREMENTS ARE APPROXIMATE.