

FRANKLIN VILLAGE PLAZA



32716 Franklin Road
Franklin, MI 48025



Retail Opportunity
1,464 ± SF

FOR LEASE
Available February 2025

PROPERTY HIGHLIGHTS



Description

Situated in the heart of Franklin, a highly affluent and desirable area known for its charm and thriving community. The city of Franklin boasts a high-income population, making it an ideal location for businesses targeting affluent clientele. This 1,464 ± SF retail space is available for lease February 2025.

Address

32716 Franklin Road
Franklin, MI 48025

Features

- Rare Retail Space Available
- Affluent Community
- Excellent Road Visibility
- 25 Parking Spaces Available
- Zoning - General Commercial

Asking Rent

\$22/SF plus NNN

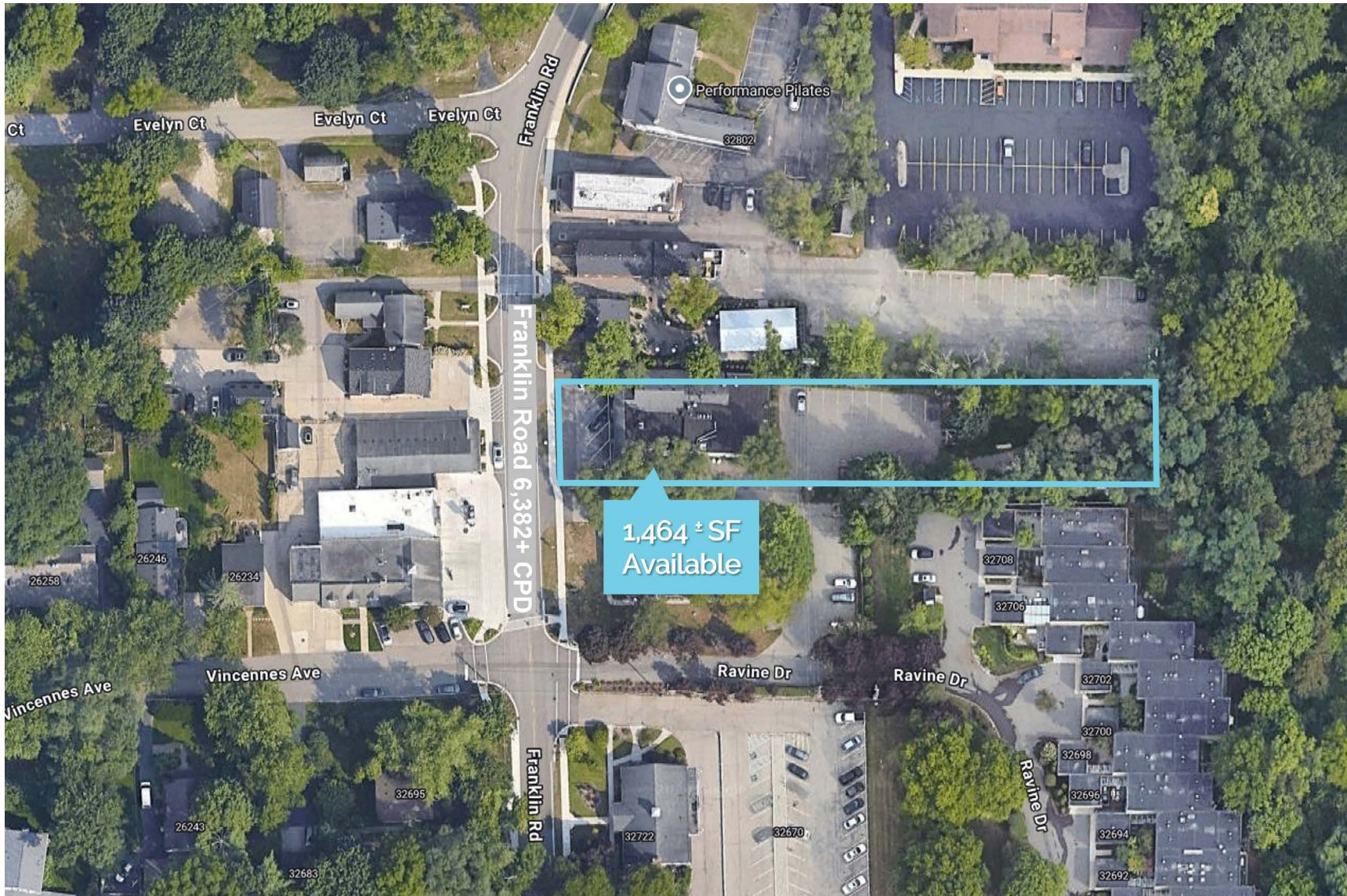
Traffic Counts

W. 14 Mile Rd - 5,430+ cpd
Franklin Rd - 6,382+ cpd

Demographics

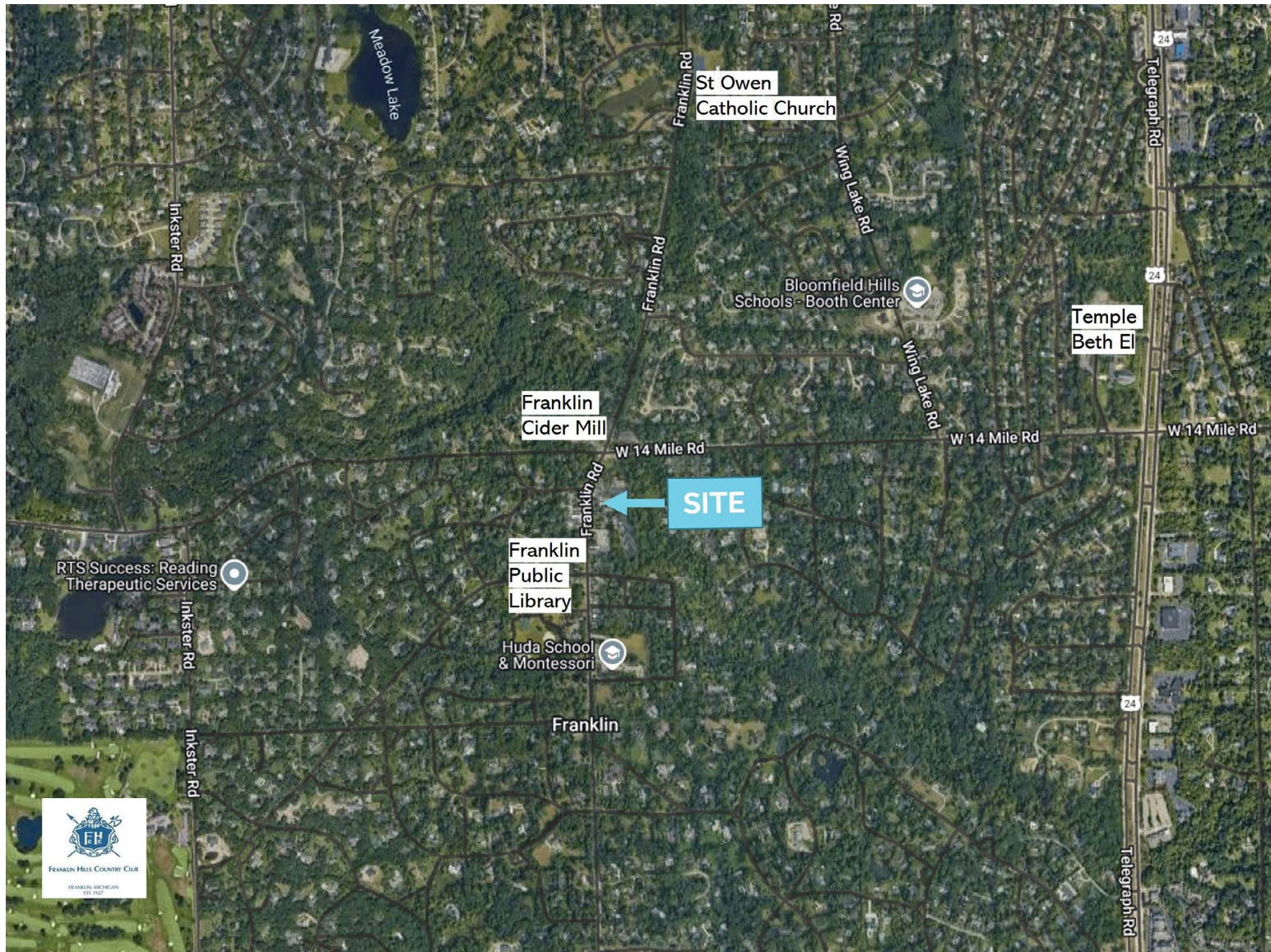
	1 MILE	3 MILES	5 MILES
POPULATION:	4,124	53,886	172,065
HOUSEHOLDS:	1,553	23,430	71,641
AVG. HOUSEHOLD INCOME:	\$300,617	\$173,140	\$184,427
DAYTIME POPULATION:	2,334	66,652	204,929

The information contained herein has been obtained through sources deemed reliable by On Q Commercial Real Estate but cannot be guaranteed for its accuracy. We recommend to the buyer or lessee that any information, which is of special interest, should be obtained through independent verification. ALL MEASUREMENTS ARE APPROXIMATE.



The information contained herein has been obtained through sources deemed reliable by On Q Commercial Real Estate but cannot be guaranteed for its accuracy. We recommend to the buyer or lessee that any information, which is of special interest, should be obtained through independent verification. ALL MEASUREMENTS ARE APPROXIMATE.

MACRO AERIAL



The information contained herein has been obtained through sources deemed reliable by On Q Commercial Real Estate but cannot be guaranteed for its accuracy. We recommend to the buyer or lessee that any information, which is of special interest, should be obtained through independent verification. ALL MEASUREMENTS ARE APPROXIMATE.



OnQ
COMMERCIAL
REAL ESTATE

JOE QONJA

Principal

C: (248) 977-7799

O: (248) 712-3300

E: joe@onqcre.com

LEO ALLUS

Associate

C: (248) 321-3325

O: (248) 712-3300

E: leo@onqcre.com

100 W. Long Lake Rd. Suite 122 Bloomfield Hills, MI 48304

www.onqcre.com

The information contained herein has been obtained through sources deemed reliable by On Q Commercial Real Estate but cannot be guaranteed for its accuracy. We recommend to the buyer or lessee that any information, which is of special interest, should be obtained through independent verification. ALL MEASUREMENTS ARE APPROXIMATE.