

RENOVATED RETAIL CENTER

FLUSHING & PIERSON RD



OnQ
COMMERCIAL
REAL ESTATE

1414 Flushing Road
Flushing, MI 48433



1,500 ± SF
Available

Retail Opportunity
1,500 ± SF

FOR LEASE

Description

Join TrvFit gym in this newly renovated retail strip center available for lease in Flushing, MI. Featuring excellent visibility, modern upgrades to the facade and ample parking, this is ideal for retail, office, or service-oriented businesses looking to benefit from a prime location with strong community presence.

Address

1414 Flushing Road
Flushing, MI 48433

Features

- **1,500 ± SF Available**
- **1.21 Acres**
- **Newly Renovated**
- **Great Road Visibility**
- **29 Parking Spaces**
- **Zoned B-2**

Asking Rent

Contact Broker

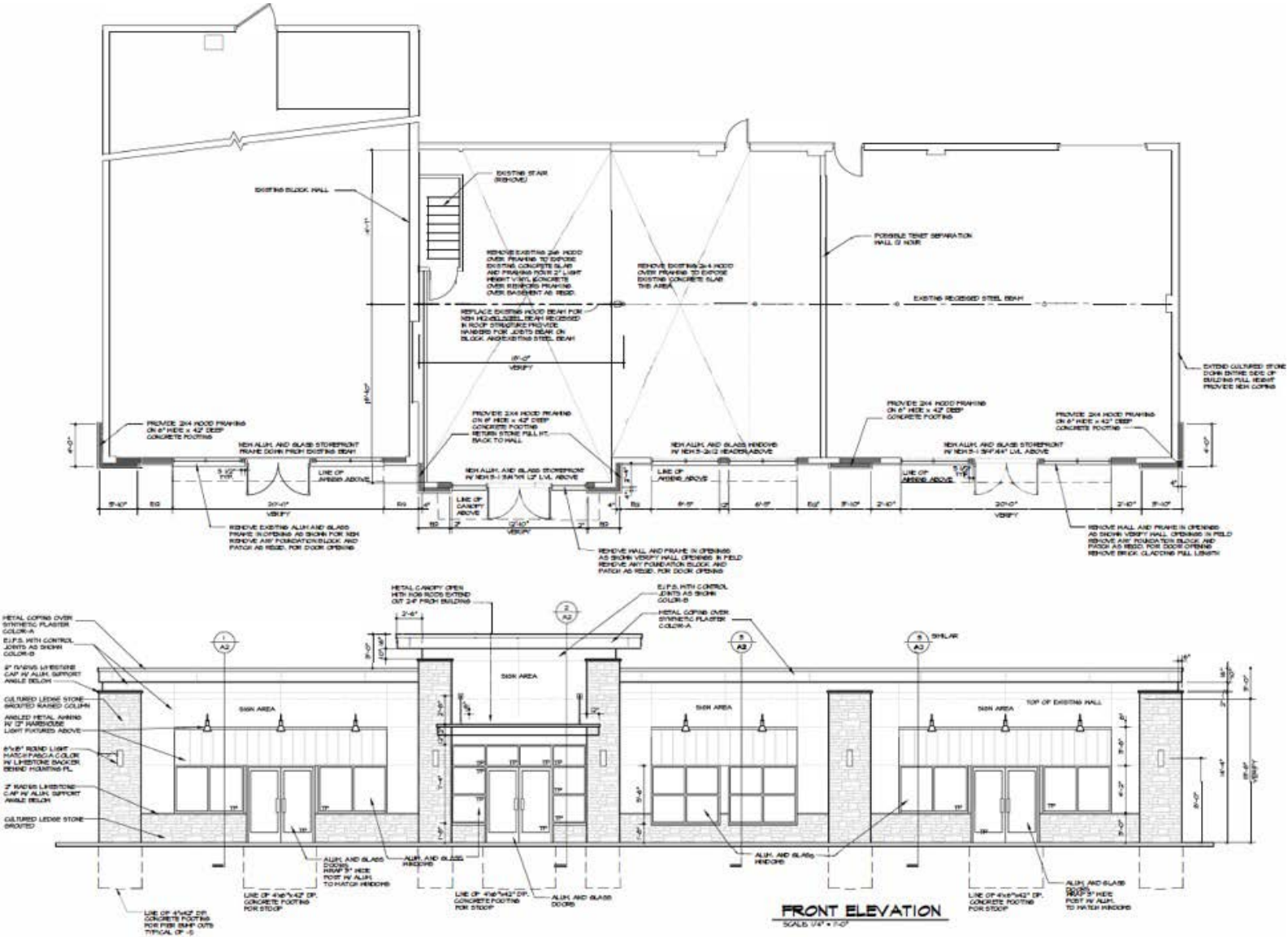
Traffic Counts

Pierson Rd - 13,788+ cpd
Flushing Rd - 7,543+ cpd
E Main St - 19,233+ cpd

Demographics

	3 MILE	5 MILES	7 MILES
POPULATION:	23,392	55,077	114,886
HOUSEHOLDS:	9,856	23,218	48,337
AVG. HOUSEHOLD INCOME:	\$96,392	\$79,018	\$68,060
DAYTIME POPULATION:	13,748	33,487	79,620

SITE PLAN



The information contained herein has been obtained through sources deemed reliable by On Q Commercial Real Estate but cannot be guaranteed for its accuracy. We recommend to the buyer or lessee that any information, which is of special interest, should be obtained through independent verification. ALL MEASUREMENTS ARE APPROXIMATE.

MICRO AERIAL



The information contained herein has been obtained through sources deemed reliable by On Q Commercial Real Estate but cannot be guaranteed for its accuracy. We recommend to the buyer or lessee that any information, which is of special interest, should be obtained through independent verification. ALL MEASUREMENTS ARE APPROXIMATE.



The information contained herein has been obtained through sources deemed reliable by On Q Commercial Real Estate but cannot be guaranteed for its accuracy. We recommend to the buyer or lessee that any information, which is of special interest, should be obtained through independent verification. ALL MEASUREMENTS ARE APPROXIMATE.



OnQ
COMMERCIAL
REAL ESTATE

JOE QONJA

Principal Broker

C: (248) 977-7799

O: (248) 712-3300

E: joe@onqcre.com

LEO ALLUS

Associate

C: (248) 321-3325

O: (248) 712-3300

E: leo@onqcre.com

100 W. Long Lake Rd. Suite 122 Bloomfield Hills, MI 48304

www.onqcre.com

The information contained herein has been obtained through sources deemed reliable by On Q Commercial Real Estate but cannot be guaranteed for its accuracy. We recommend to the buyer or lessee that any information, which is of special interest, should be obtained through independent verification. ALL MEASUREMENTS ARE APPROXIMATE.