

# REID'S Plaza

Former Pharmacy/Retail &  
Urgent Care

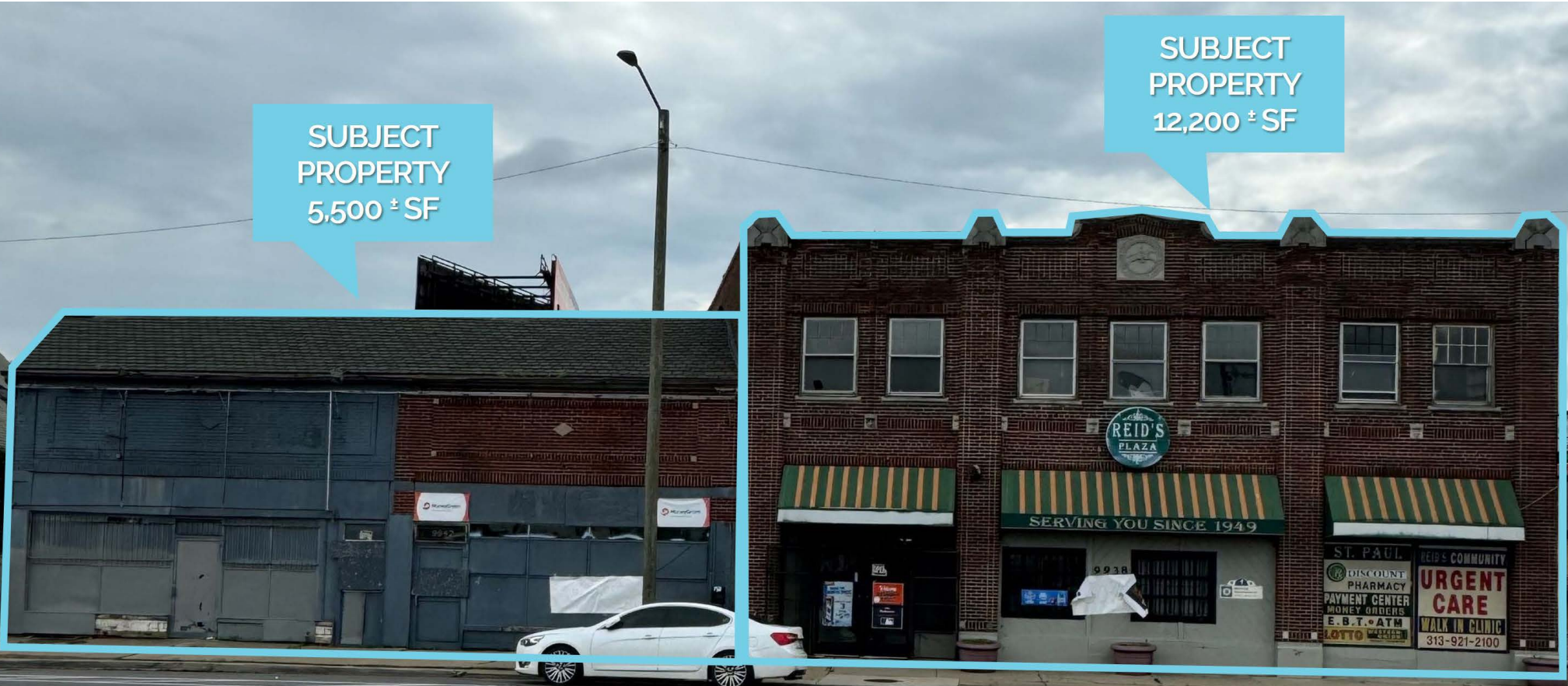


OnQ  
COMMERCIAL  
REAL ESTATE

9934-9940 Harper Ave.  
Detroit, MI 48213

SUBJECT  
PROPERTY  
5,500 ± SF

SUBJECT  
PROPERTY  
12,200 ± SF



**Retail Opportunity**  
*12,200 ± SF & 5,500 ± SF*

**FOR LEASE**

# PROPERTY HIGHLIGHTS



## Description

Former pharmacy and urgent care available for lease at the southeast corner of Harper and Gratiot Ave. 10,000 ± SF (additional 2,200 ± SF on 2nd floor) & 5,500 ± SF of space in this neighborhood shopping district with great road visibility and ample parking.

## Address

9934-9940 Harper Ave.  
Detroit, MI 48213

## Asking Rent

CONTACT BROKER

## Features

- Ideal for Retailer or Distributor
- Excellent Road Visibility
- Rear & Streetside Parking
- Immediate Access to I-94
- Zoning - General Business District

## Traffic Counts

Gratiot Ave. - 39,683+ cpd

Harper Ave. - 4,187+ cpd

I-94 Westbound - 66,498+ cpd

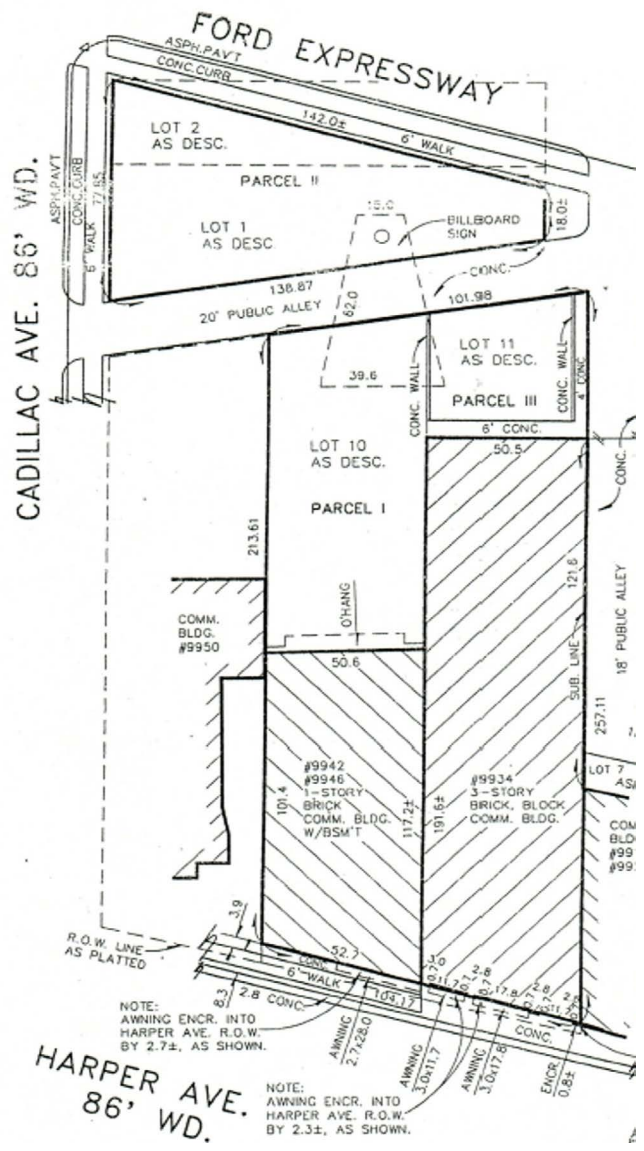
I-94 Eastbound - 63,542+ cpd

## Demographics

	1 MILE	3 MILES	5 MILES
POPULATION:	8,078	108,095	334,770
HOUSEHOLDS:	3,201	40,730	137,071
AVG. HOUSEHOLD INCOME:	\$48,707	\$55,774	\$70,792
DAYTIME POPULATION:	7,379	71,230	281,961

The information contained herein has been obtained through sources deemed reliable by On Q Commercial Real Estate but cannot be guaranteed for its accuracy. We recommend to the buyer or lessee that any information, which is of special interest, should be obtained through independent verification. ALL MEASUREMENTS ARE APPROXIMATE.





The information contained herein has been obtained through sources deemed reliable by On Q Commercial Real Estate but cannot be guaranteed for its accuracy. We recommend to the buyer or lessee that any information, which is of special interest, should be obtained through independent verification. ALL MEASUREMENTS ARE APPROXIMATE.



The information contained herein has been obtained through sources deemed reliable by On Q Commercial Real Estate but cannot be guaranteed for its accuracy. We recommend to the buyer or lessee that any information, which is of special interest, should be obtained through independent verification. ALL MEASUREMENTS ARE APPROXIMATE.



OnQ  
COMMERCIAL  
REAL ESTATE

**JOE QONJA**

Listing Contact

C: (248) 977-7799

O: (248) 712-3300

E: [joe@onqcre.com](mailto:joe@onqcre.com)

**LEO ALLUS**

Listing Contact

C: (248) 321-3325

O: (248) 712-3300

E: [leo@onqcre.com](mailto:leo@onqcre.com)

100 W. Long Lake Rd. Suite 122 Bloomfield Hills, MI 48304

**[www.onqcre.com](http://www.onqcre.com)**

The information contained herein has been obtained through sources deemed reliable by On Q Commercial Real Estate but cannot be guaranteed for its accuracy. We recommend to the buyer or lessee that any information, which is of special interest, should be obtained through independent verification. ALL MEASUREMENTS ARE APPROXIMATE.