

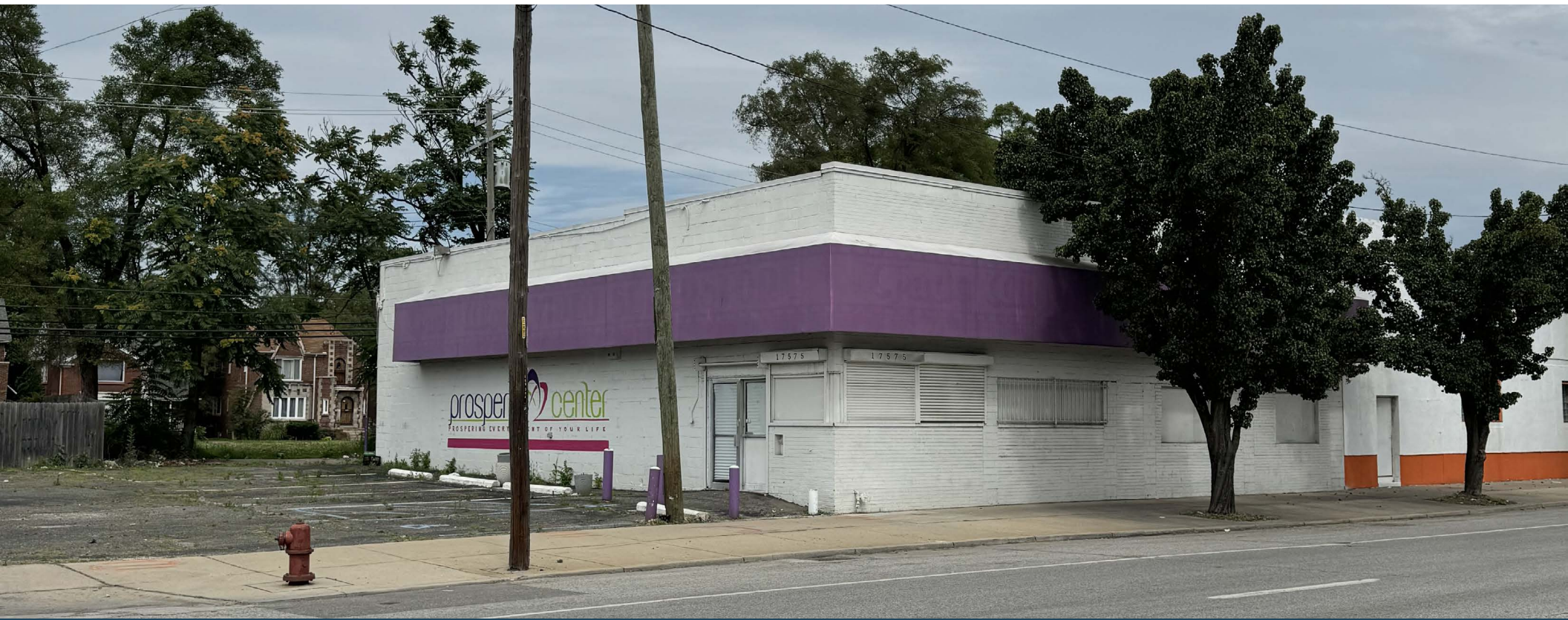
UNIVERSITY DISTRICT RETAIL



**17575 Livernois
Detroit, MI 48221**

**SALE PRICE
\$459,000**

SELLER FINANCING AVAILABLE



Retail Opportunity
3,947 ± SF

FOR SALE

PROPERTY HIGHLIGHTS



Description

Positioned in a highly visible, vibrant neighborhood district in Detroit, this 3,947 ± SF property offers an exceptional opportunity for business owners or investors. With its strategic location and outstanding visibility, this property is perfectly suited for retail, education, healthcare or service-oriented businesses. Don't miss this rare opportunity to establish a presence in one of Detroit's most promising neighborhoods!

Address

17575 Livernois
Detroit, MI 48221

Sale Price

\$459,000

Features

- .39 Acres
- Excellent Road Visibility
- Ample Parking
- Densely Populated
- Zoning - Local Business & Residential District

Traffic Counts

Livernois Northbound - 12,349+ cpd

Livernois Southbound - 12,362+ cpd

McNichols Rd Eastbound - 7,288+ cpd

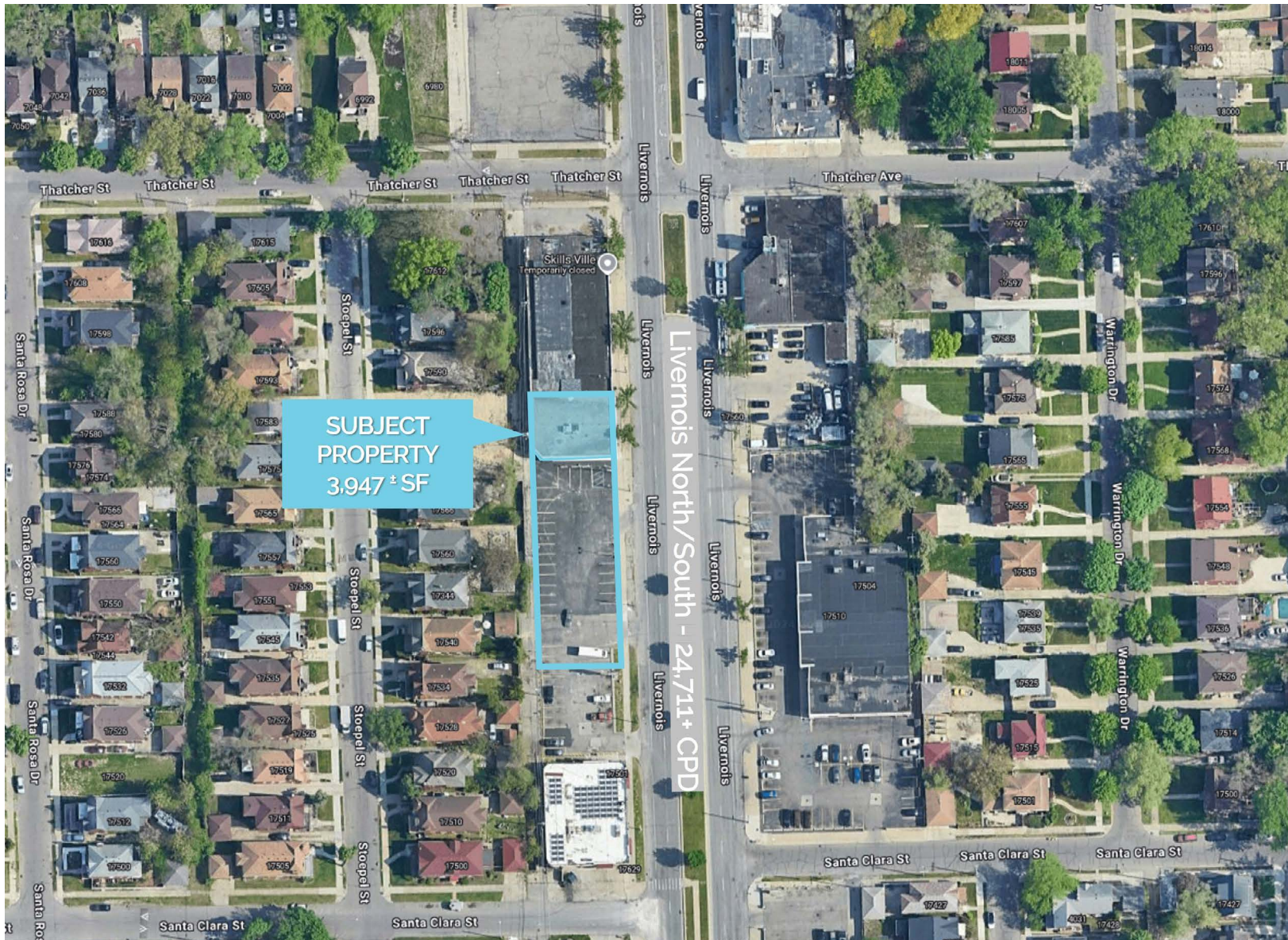
McNichols Rd Westbound - 4,929+ cpd

Demographics

	1 MILE	3 MILES	5 MILES
POPULATION:	21,554	148,268	435,543
HOUSEHOLDS:	8,214	62,328	181,333
AVG. HOUSEHOLD INCOME:	\$84,723	\$69,989	\$74,477
DAYTIME POPULATION:	11,222	88,205	266,942

The information contained herein has been obtained through sources deemed reliable by On Q Commercial Real Estate but cannot be guaranteed for its accuracy. We recommend to the buyer or lessee that any information, which is of special interest, should be obtained through independent verification. ALL MEASUREMENTS ARE APPROXIMATE.

MICRO AERIAL

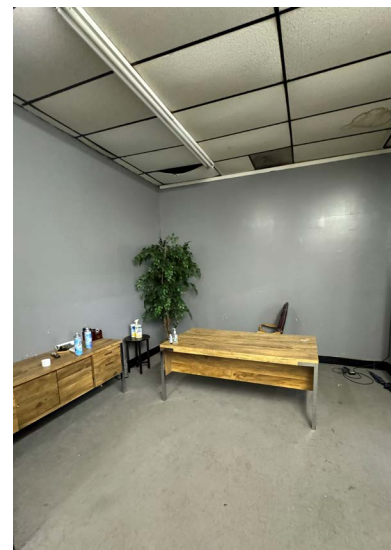
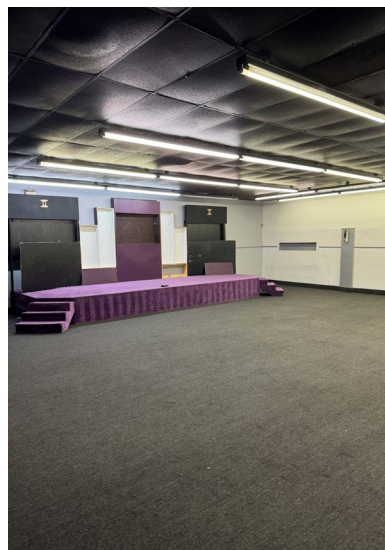
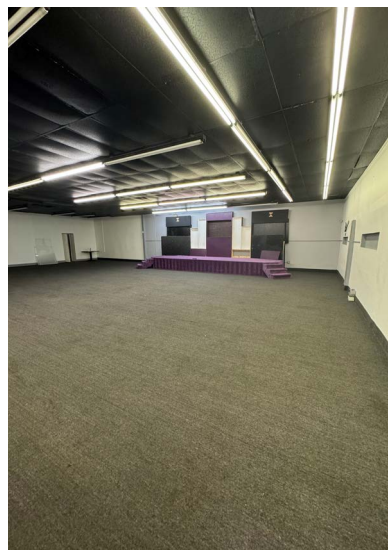


The information contained herein has been obtained through sources deemed reliable by On Q Commercial Real Estate but cannot be guaranteed for its accuracy. We recommend to the buyer or lessee that any information, which is of special interest, should be obtained through independent verification. ALL MEASUREMENTS ARE APPROXIMATE.

MACRO AERIAL



The information contained herein has been obtained through sources deemed reliable by On Q Commercial Real Estate but cannot be guaranteed for its accuracy. We recommend to the buyer or lessee that any information, which is of special interest, should be obtained through independent verification. ALL MEASUREMENTS ARE APPROXIMATE.



The information contained herein has been obtained through sources deemed reliable by On Q Commercial Real Estate but cannot be guaranteed for its accuracy. We recommend to the buyer or lessee that any information, which is of special interest, should be obtained through independent verification. ALL MEASUREMENTS ARE APPROXIMATE.



OnQ
COMMERCIAL
REAL ESTATE

JOE QONJA

Principal Broker

C: (248) 977-7799

O: (248) 712-3300

E: joe@onqcre.com

LEO ALLUS

Associate

C: (248) 321-3325

O: (248) 712-3300

E: leo@onqcre.com

100 W. Long Lake Rd. Suite 122 Bloomfield Hills, MI 48304

www.onqcre.com

The information contained herein has been obtained through sources deemed reliable by On Q Commercial Real Estate but cannot be guaranteed for its accuracy. We recommend to the buyer or lessee that any information, which is of special interest, should be obtained through independent verification. ALL MEASUREMENTS ARE APPROXIMATE.