

# JONNA'S PENNYLAKE PLAZA

PONTIAC TRAIL & COMMERCE RD

1266 S Commerce Road  
Walled Lake, MI 48390



**Retail Opportunity**  
2,155 ± SF

**FOR LEASE**

## Description

Join Jonna's Pennylake Market in Walled Lake, MI. 2,155 ± SF of retail space in this neighborhood shopping center located at Pontiac Trail and Commerce Road. Highly visible location with steady traffic from Pennylake Market. This property recently received a refreshed exterior with a modernized facade.

## Address

1266 S Commerce Road  
Walled Lake, MI 48390

## Features

- New Ownership & Management at Pennylake Market
- Multiple Curb Cuts
- Great Accessibility
- Ample Parking Spaces
- Zoned General Commercial

## Asking Rent

\$12/SF plus NNN

## Traffic Counts

Pontiac Trail - 23,064+ cpd  
Commerce Rd - 9,639+ cpd  
Maple Rd - 24,359+ cpd

## Demographics

	1 MILE	3 MILES	5 MILES
POPULATION:	8,424	66,168	143,645
HOUSEHOLDS:	4,129	32,224	62,934
AVG. HOUSEHOLD INCOME:	\$107,021	\$108,126	\$132,584
DAYTIME POPULATION:	5,706	50,698	146,420



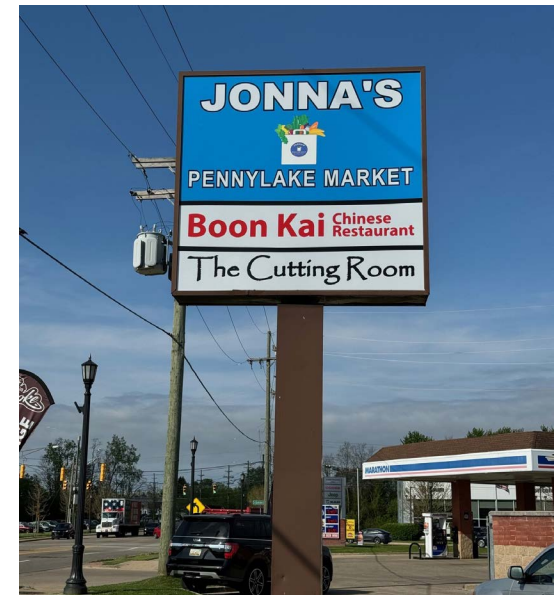
# MICRO AERIAL



The information contained herein has been obtained through sources deemed reliable by On Q Commercial Real Estate but cannot be guaranteed for its accuracy. We recommend to the buyer or lessee that any information, which is of special interest, should be obtained through independent verification. ALL MEASUREMENTS ARE APPROXIMATE.



## JONNA'S PENNYLAKE PLAZA



The information contained herein has been obtained through sources deemed reliable by On Q Commercial Real Estate but cannot be guaranteed for its accuracy. We recommend to the buyer or lessee that any information, which is of special interest, should be obtained through independent verification. ALL MEASUREMENTS ARE APPROXIMATE.



OnQ  
COMMERCIAL  
REAL ESTATE

**JOE QONJA**

Principal Broker

C: (248) 977-7799

O: (248) 712-3300

E: [joe@onqcre.com](mailto:joe@onqcre.com)

**LEO ALLUS**

Associate

C: (248) 321-3325

O: (248) 712-3300

E: [leo@onqcre.com](mailto:leo@onqcre.com)

100 W. Long Lake Rd. Suite 122 Bloomfield Hills, MI 48304

**[www.onqcre.com](http://www.onqcre.com)**

The information contained herein has been obtained through sources deemed reliable by On Q Commercial Real Estate but cannot be guaranteed for its accuracy. We recommend to the buyer or lessee that any information, which is of special interest, should be obtained through independent verification. ALL MEASUREMENTS ARE APPROXIMATE.