

# SHOPPES ON SEVEN



10600-10636 W 7 Mile Road  
Detroit, MI 48221



**Retail Opportunity**  
1,000 ± SF

**FOR LEASE**

# PROPERTY HIGHLIGHTS



## Description

This 1,000 SF retail space in Detroit, Michigan, boasts an excellent location anchored by ATI Physical Therapy and Metro by T-Mobile. With ample parking and great visibility along 7 Mile Road, it offers prime exposure for potential tenants looking to establish or expand their retail presence within this densely populated neighborhood.

## Address

10600-10636 W 7 Mile Road  
Detroit, MI 48221

## Features

- Excellent Road Visibility
- Multiple Curb Cuts
- Densely Populated
- Zoned B2 - Local Business
- Built in 2005/Renovated in 2015

## Area Tenants



## Asking Rent

\$16/SF plus NNN

## Traffic Counts

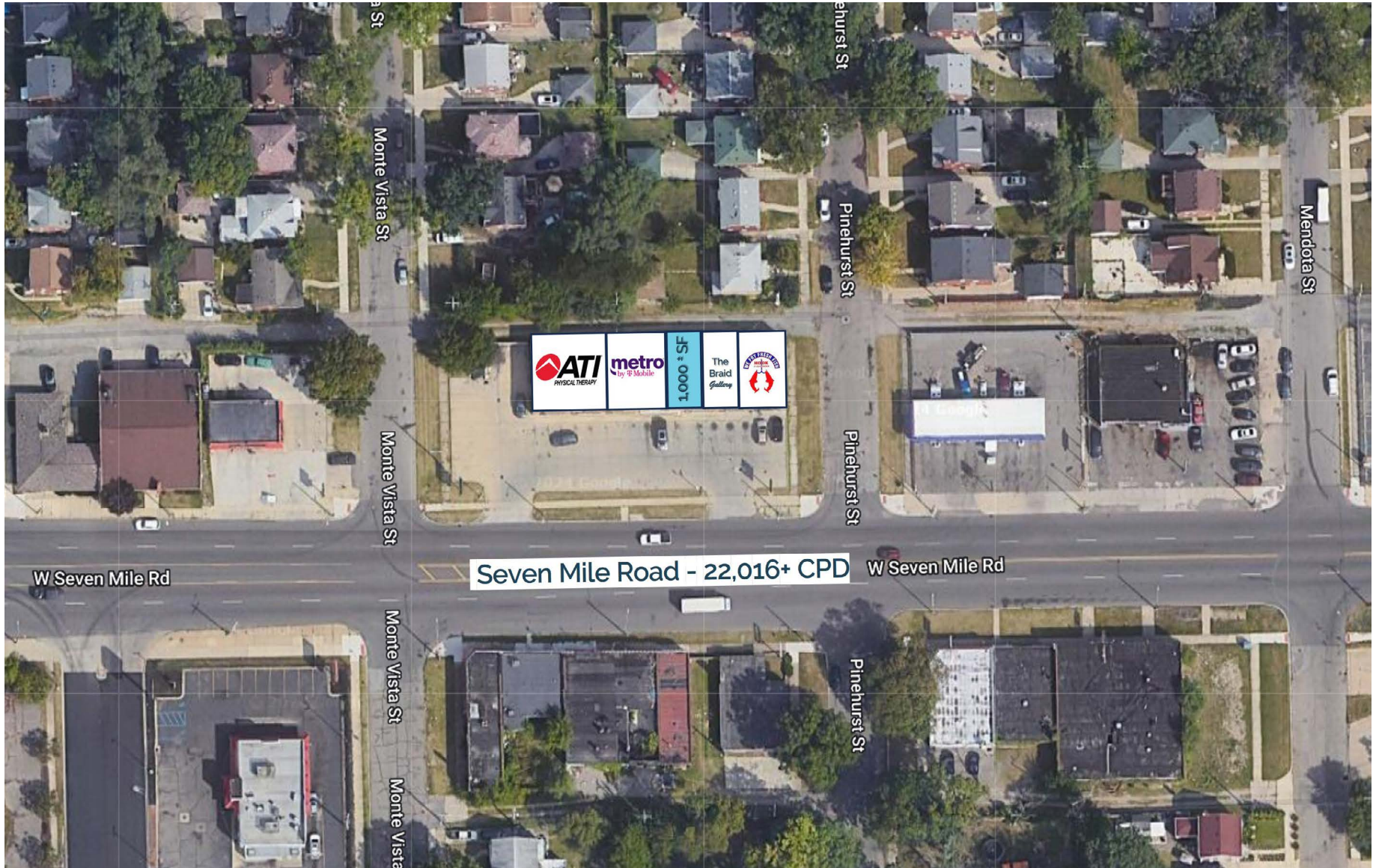
7 Mile Rd- 22,016+ cpd  
Wyoming Ave - 16,943+ cpd  
Outer Drive - 10,233+ cpd

## Demographics

	1 MILE	3 MILES	5 MILES
POPULATION:	23,542	157,904	391,033
HOUSEHOLDS:	9,602	66,036	163,998
AVG. HOUSEHOLD INCOME:	\$76,368	\$78,385	\$81,771
DAYTIME POPULATION:	12,941	101,586	256,824

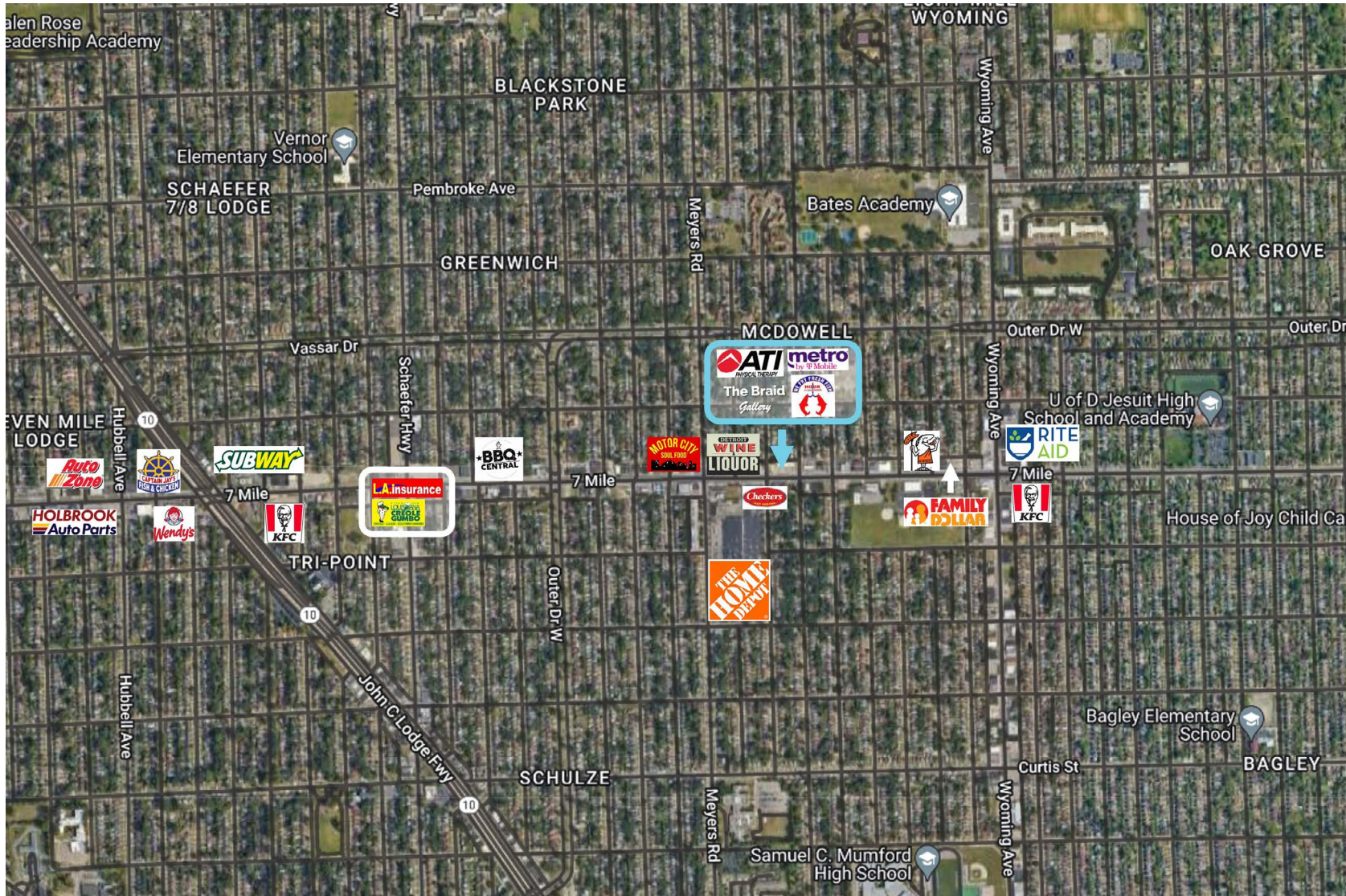
The information contained herein has been obtained through sources deemed reliable by On Q Commercial Real Estate but cannot be guaranteed for its accuracy. We recommend to the buyer or lessee that any information, which is of special interest, should be obtained through independent verification. ALL MEASUREMENTS ARE APPROXIMATE.

# MICRO AERIAL

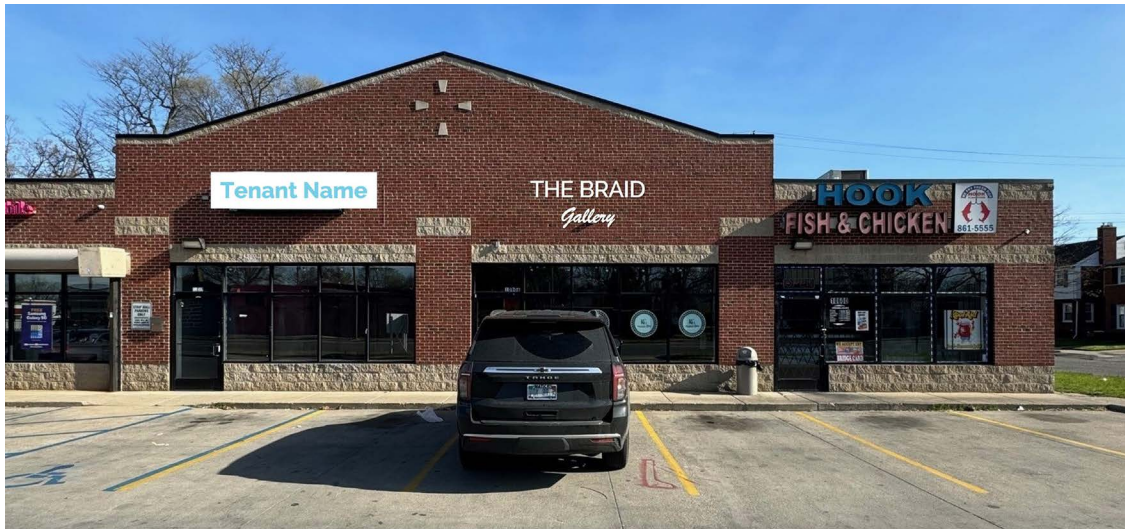


The information contained herein has been obtained through sources deemed reliable by On Q Commercial Real Estate but cannot be guaranteed for its accuracy. We recommend to the buyer or lessee that any information, which is of special interest, should be obtained through independent verification. ALL MEASUREMENTS ARE APPROXIMATE.

# MACRO AERIAL



The information contained herein has been obtained through sources deemed reliable by On Q Commercial Real Estate but cannot be guaranteed for its accuracy. We recommend to the buyer or lessee that any information, which is of special interest, should be obtained through independent verification. ALL MEASUREMENTS ARE APPROXIMATE.



The information contained herein has been obtained through sources deemed reliable by On Q Commercial Real Estate but cannot be guaranteed for its accuracy. We recommend to the buyer or lessee that any information, which is of special interest, should be obtained through independent verification. ALL MEASUREMENTS ARE APPROXIMATE.



OnQ  
COMMERCIAL  
REAL ESTATE

**JOE QONJA**

Listing Contact

C: (248) 977-7799

O: (248) 712-3300

E: [joe@onqcre.com](mailto:joe@onqcre.com)

**LEO ALLUS**

Listing Contact

C: (248) 321-3325

O: (248) 712-3300

E: [leo@onqcre.com](mailto:leo@onqcre.com)

100 W. Long Lake Rd. Suite 122 Bloomfield Hills, MI 48304

**[www.onqcre.com](http://www.onqcre.com)**

The information contained herein has been obtained through sources deemed reliable by On Q Commercial Real Estate but cannot be guaranteed for its accuracy. We recommend to the buyer or lessee that any information, which is of special interest, should be obtained through independent verification. ALL MEASUREMENTS ARE APPROXIMATE.