

# NEW RETAIL CENTER

NWC OF PIERSON & LUCE ROAD



6278 W Pierson Road  
Flushing, MI 48433



**Retail Opportunity**  
1,000 ± SF

**FOR LEASE**

# PROPERTY HIGHLIGHTS



## Description

Join Jimmy John's, Smoothie King and Pizza Hut in this recently constructed retail strip center in Flushing, MI. Situated in a high-visibility location at a signalized intersection of Pierson & Luce Rd. Ample parking and convenient access further enhance the appeal, providing an inviting environment for businesses and customers alike.

## Address

6278 W Pierson Road  
Flushing, MI 48433

## Features

- **1,000 ± SF available (20'x50')**
- **New retail center built in 2023**
- **Great road visibility**
- **Ample parking**

## Co-Tenants



## Asking Rent

Contact Broker

## Traffic Counts

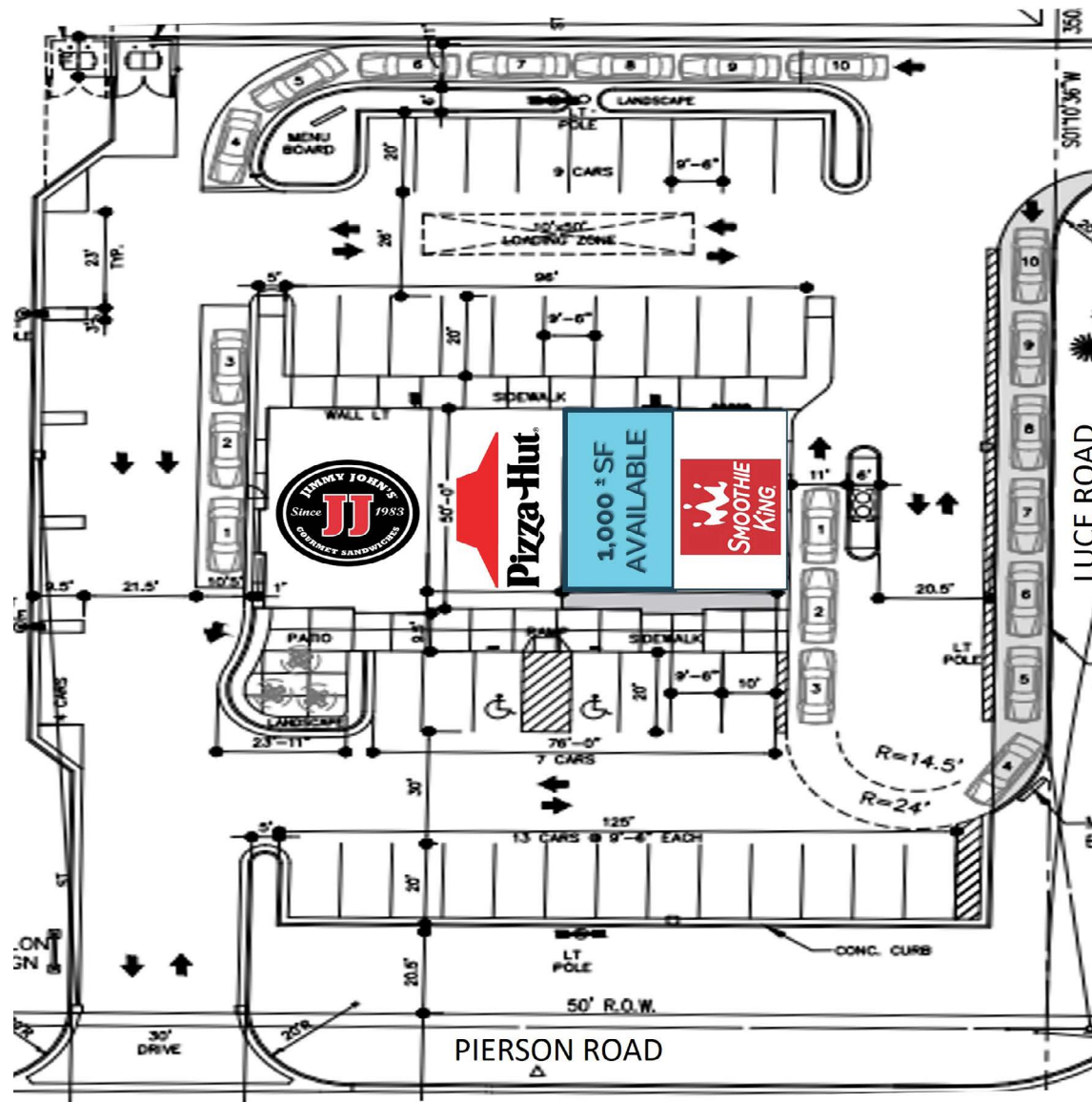
Pierson Rd - 35,690+ cpd  
Elms Rd - 21,570+ cpd

## Demographics

	3 MILE	5 MILES	7 MILES
POPULATION:	23,876	73,391	123,78
HOUSEHOLDS:	9,760	29,913	51,289
AVG. HOUSEHOLD INCOME:	\$105,733	\$80,953	\$72,040
DAYTIME POPULATION:	14,718	44,843	93,949

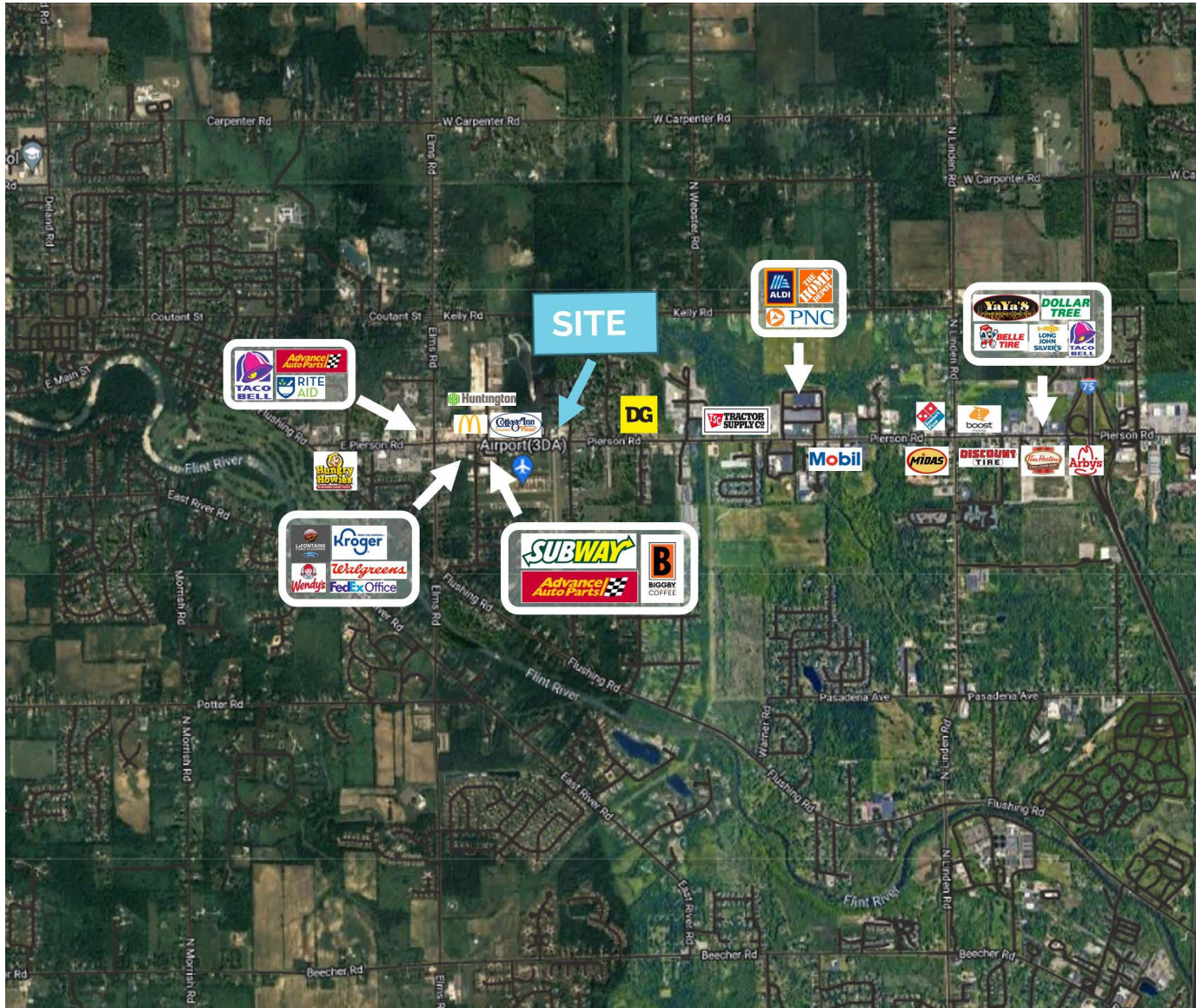
The information contained herein has been obtained through sources deemed reliable by On Q Commercial Real Estate but cannot be guaranteed for its accuracy. We recommend to the buyer or lessee that any information, which is of special interest, should be obtained through independent verification. ALL MEASUREMENTS ARE APPROXIMATE.

# SITE PLAN



The information contained herein has been obtained through sources deemed reliable by On Q Commercial Real Estate but cannot be guaranteed for its accuracy. We recommend to the buyer or lessee that any information, which is of special interest, should be obtained through independent verification. ALL MEASUREMENTS ARE APPROXIMATE.

# MACRO AERIAL



The information contained herein has been obtained through sources deemed reliable by On Q Commercial Real Estate but cannot be guaranteed for its accuracy. We recommend to the buyer or lessee that any information, which is of special interest, should be obtained through independent verification. ALL MEASUREMENTS ARE APPROXIMATE.



The information contained herein has been obtained through sources deemed reliable by On Q Commercial Real Estate but cannot be guaranteed for its accuracy. We recommend to the buyer or lessee that any information, which is of special interest, should be obtained through independent verification. ALL MEASUREMENTS ARE APPROXIMATE.



OnQ  
COMMERCIAL  
REAL ESTATE

**JOE QONJA**

Listing Contact

C: (248) 977-7799

O: (248) 712-3300

E: [joe@onqcre.com](mailto:joe@onqcre.com)

**LEO ALLUS**

Listing Contact

C: (248) 321-3325

O: (248) 712-3300

E: [leo@onqcre.com](mailto:leo@onqcre.com)

100 W. Long Lake Rd. Suite 122 Bloomfield Hills, MI 48304

**[www.onqcre.com](http://www.onqcre.com)**

The information contained herein has been obtained through sources deemed reliable by On Q Commercial Real Estate but cannot be guaranteed for its accuracy. We recommend to the buyer or lessee that any information, which is of special interest, should be obtained through independent verification. ALL MEASUREMENTS ARE APPROXIMATE.