

NEW RETAIL CENTER

NWC OF PIERSON & LUCE ROAD



OnQ
COMMERCIAL
REAL ESTATE

6278 W Pierson Road, Flushing, MI 48433



Retail Opportunity
1,050 ± SF

FOR LEASE

PROPERTY HIGHLIGHTS



Description

Join Jimmy John's, Smoothie King and Pizza Hut in this recently constructed retail strip center in Flushing, MI. Situated in a high-visibility location at a signalized intersection of Pierson & Luce Rd. Ample parking and convenient access further enhance the appeal, providing an inviting environment for businesses and customers alike.

Address

6278 W Pierson Road
Flushing, MI 48433

Features

- **1,050 ± SF available (20'x50')**
- **New retail center built in 2023**
- **Great road visibility**
- **Ample parking**

Co-Tenants



Asking Rent

Contact Broker

Traffic Counts

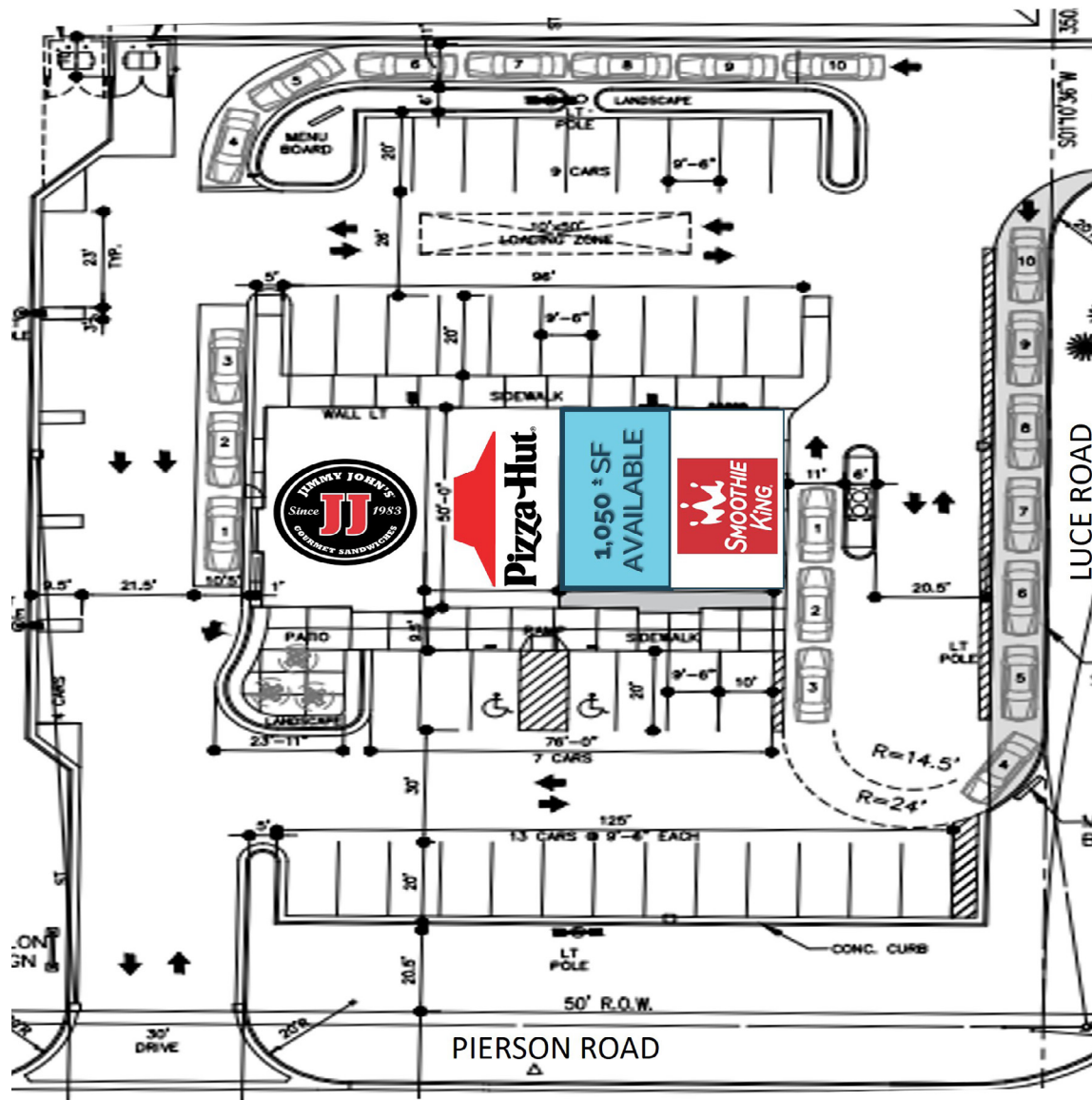
Pierson Rd - 35,690+ cpd
Elms Rd - 21,570+ cpd

Demographics

	3 MILE	5 MILES	7 MILES
POPULATION:	23,876	73,391	123,778
HOUSEHOLDS:	9,760	29,913	51,289
AVG. HOUSEHOLD INCOME:	\$105,733	\$80,953	\$72,040
DAYTIME POPULATION:	14,718	44,843	93,949

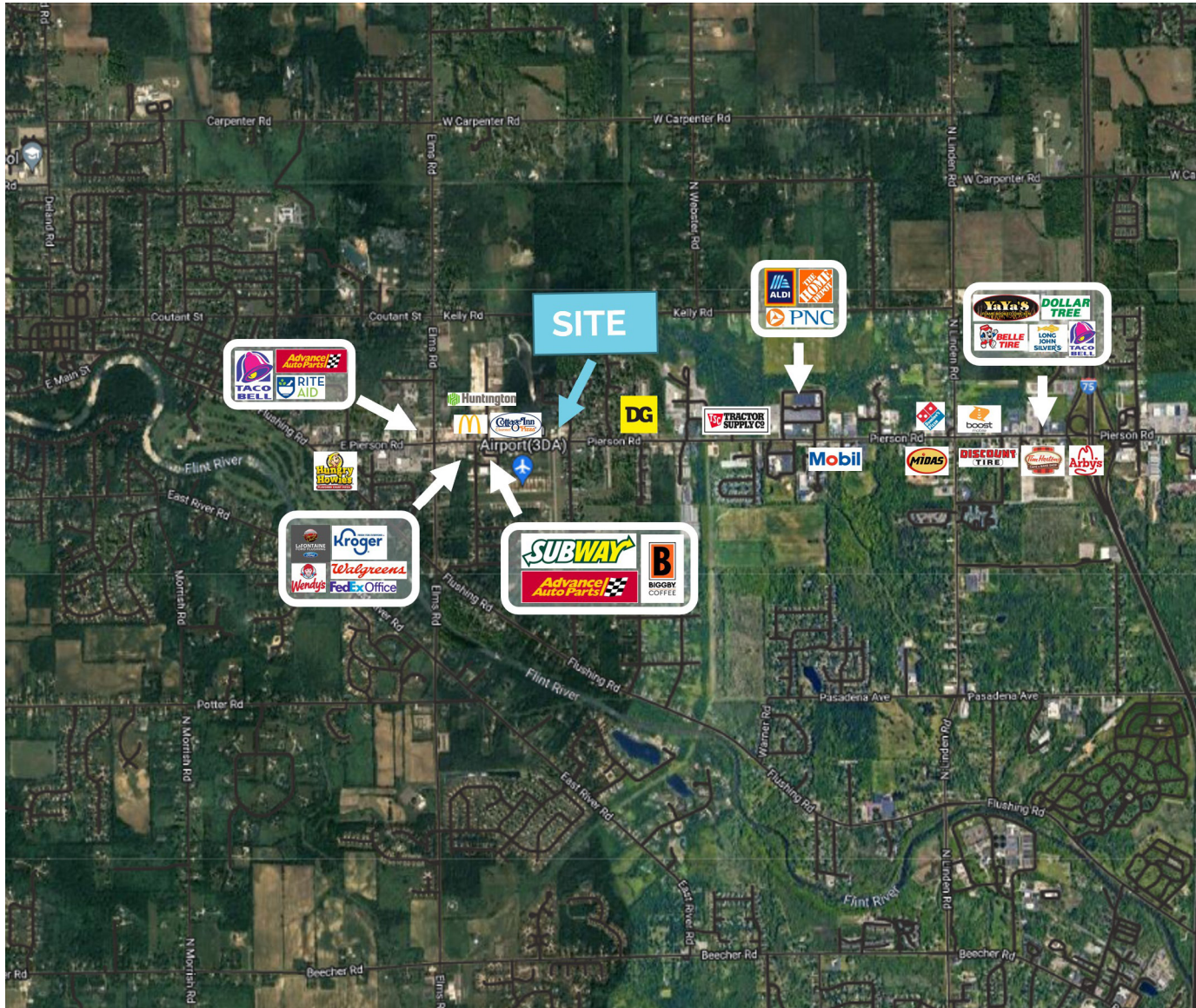
The information contained herein has been obtained through sources deemed reliable by On Q Commercial Real Estate but cannot be guaranteed for its accuracy. We recommend to the buyer or lessee that any information, which is of special interest, should be obtained through independent verification. ALL MEASUREMENTS ARE APPROXIMATE.

SITE PLAN



The information contained herein has been obtained through sources deemed reliable by On Q Commercial Real Estate but cannot be guaranteed for its accuracy. We recommend to the buyer or lessee that any information, which is of special interest, should be obtained through independent verification. ALL MEASUREMENTS ARE APPROXIMATE.

MACRO AERIAL



The information contained herein has been obtained through sources deemed reliable by On Q Commercial Real Estate but cannot be guaranteed for its accuracy. We recommend to the buyer or lessee that any information, which is of special interest, should be obtained through independent verification. ALL MEASUREMENTS ARE APPROXIMATE.



The information contained herein has been obtained through sources deemed reliable by On Q Commercial Real Estate but cannot be guaranteed for its accuracy. We recommend to the buyer or lessee that any information, which is of special interest, should be obtained through independent verification. ALL MEASUREMENTS ARE APPROXIMATE.



OnQ
COMMERCIAL
REAL ESTATE

JOE QONJA

Principal Broker

C: (248) 977-7799

O: (248) 712-3300

E: joe@onqcre.com

LEO ALLUS

Associate

C: (248) 321-3325

O: (248) 712-3300

E: leo@onqcre.com

100 W. Long Lake Rd. Suite 122 Bloomfield Hills, MI 48304

www.onqcre.com

The information contained herein has been obtained through sources deemed reliable by On Q Commercial Real Estate but cannot be guaranteed for its accuracy. We recommend to the buyer or lessee that any information, which is of special interest, should be obtained through independent verification. ALL MEASUREMENTS ARE APPROXIMATE.