

# LIVONIA COMMONS

Shopping Center *(Former Party City)*



13417-13701 Middlebelt Road  
Livonia, MI 48150



**Retail Opportunity**  
23,943 ± SF

**FOR LEASE**

# PROPERTY HIGHLIGHTS



## Description

Prime retail space in Livonia's premier shopping destination at the southwest corner of I-96 & Middlebelt Rd. Located in a busy power center in Livonia, MI, this former Party City space offers unmatched potential for retailers looking to establish a presence in a high-demand market. Surrounded by major national retailers, the property benefits from significant customer draw and market visibility.

## Address

13417-13701 Middlebelt Road  
Livonia, MI 48150

## Asking Rent

Contact Broker

## Features

- 23,943 ± SF Available
- Zoned C-2 General Business
- Ample parking and great visibility
- Multiple curb cuts and monument signs
- Renovated in 2014
- Densely populated

## Traffic Counts

Middlebelt Rd - 88,042+ cpd  
I-96 W - 73,147+ cpd  
I-96 E - 72,362+ cpd

## Demographics

	1 MILE	3 MILES	5 MILES
POPULATION:	5,584	90,403	282,115
HOUSEHOLDS:	2,274	37,499	118,315
AVG. HOUSEHOLD INCOME:	\$120,730	\$100,471	\$89,242
DAYTIME POPULATION:	12,866	73,363	201,535

## Major Area Tenants



The information contained herein has been obtained through sources deemed reliable by On Q Commercial Real Estate but cannot be guaranteed for its accuracy. We recommend to the buyer or lessee that any information, which is of special interest, should be obtained through independent verification. ALL MEASUREMENTS ARE APPROXIMATE.

# MICRO AERIAL



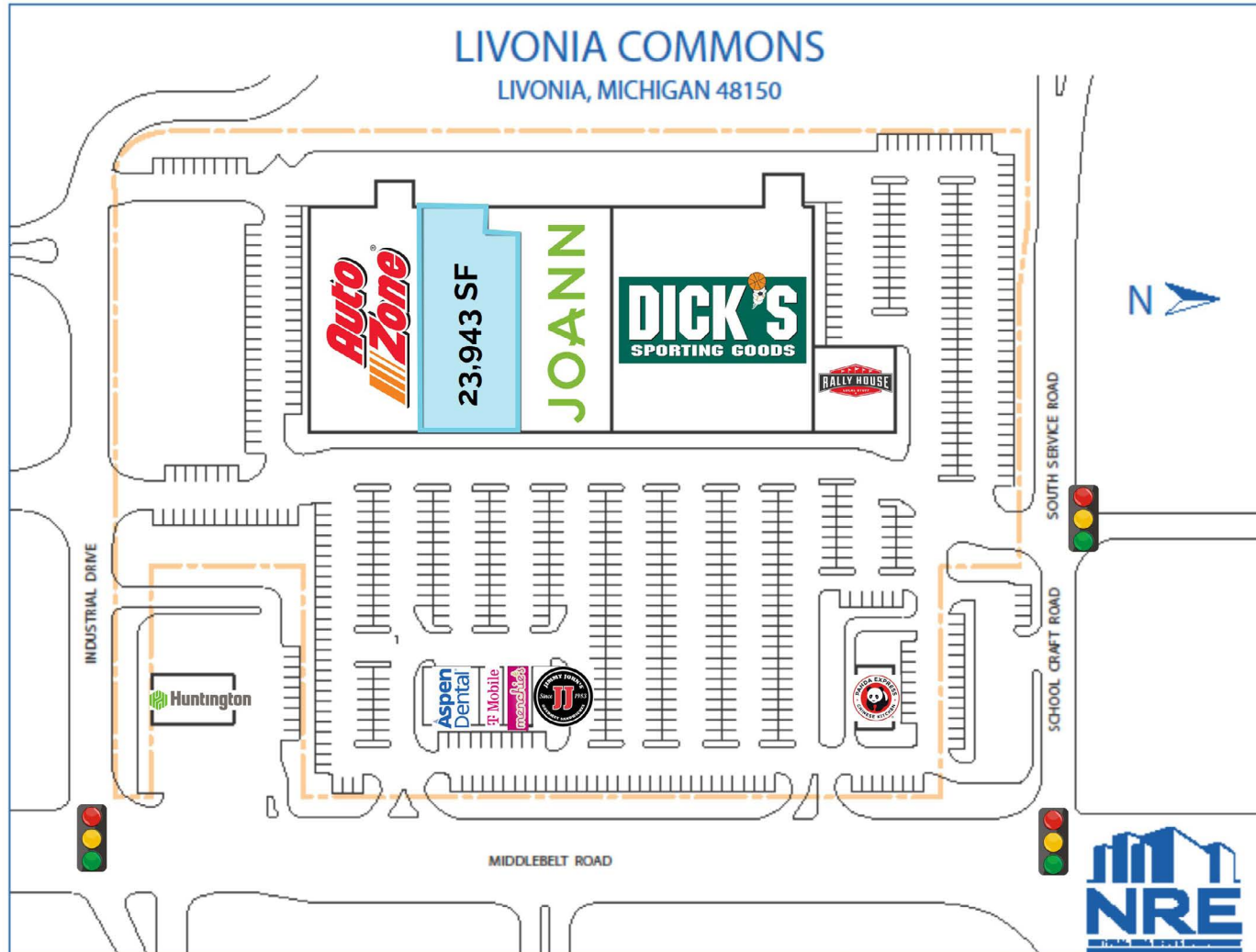
The information contained herein has been obtained through sources deemed reliable by On Q Commercial Real Estate but cannot be guaranteed for its accuracy. We recommend to the buyer or lessee that any information, which is of special interest, should be obtained through independent verification. ALL MEASUREMENTS ARE APPROXIMATE.

# MACRO AERIAL



The information contained herein has been obtained through sources deemed reliable by On Q Commercial Real Estate but cannot be guaranteed for its accuracy. We recommend to the buyer or lessee that any information, which is of special interest, should be obtained through independent verification. ALL MEASUREMENTS ARE APPROXIMATE.

# SITE PLAN



The information contained herein has been given to us by sources believed reliable. We have no reason to doubt its accuracy, but we do not guarantee it.

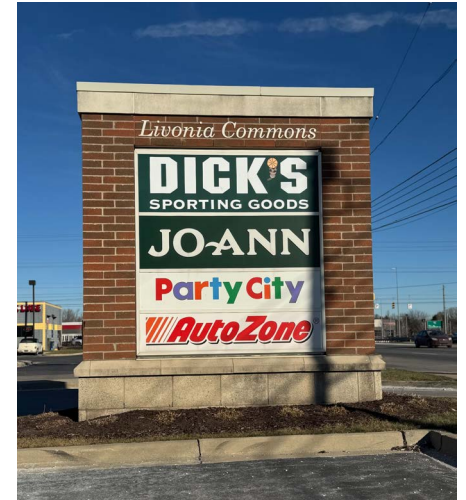
The information contained herein has been obtained through sources deemed reliable by On Q Commercial Real Estate but cannot be guaranteed for its accuracy. We recommend to the buyer or lessee that any information, which is of special interest, should be obtained through independent verification. ALL MEASUREMENTS ARE APPROXIMATE.

PHOTOS  
LIVONIA COMMONS



The information contained herein has been obtained through sources deemed reliable by On Q Commercial Real Estate but cannot be guaranteed for its accuracy. We recommend to the buyer or lessee that any information, which is of special interest, should be obtained through independent verification. ALL MEASUREMENTS ARE APPROXIMATE.

PHOTOS  
LIVONIA COMMONS



The information contained herein has been obtained through sources deemed reliable by On Q Commercial Real Estate but cannot be guaranteed for its accuracy. We recommend to the buyer or lessee that any information, which is of special interest, should be obtained through independent verification. ALL MEASUREMENTS ARE APPROXIMATE.

Operated by:



For leasing inquiries contact:



**JOE QONJA**

Principal Broker

C: (248) 977-7799

O: (248) 712-3300

E: [joe@onqcre.com](mailto:joe@onqcre.com)

**LEO ALLUS**

Associate

C: (248) 321-3325

O: (248) 712-3300

E: [leo@onqcre.com](mailto:leo@onqcre.com)

100 W. Long Lake Rd. Suite 122 Bloomfield Hills, MI 48304

[www.onqcre.com](http://www.onqcre.com)

The information contained herein has been obtained through sources deemed reliable by On Q Commercial Real Estate but cannot be guaranteed for its accuracy. We recommend to the buyer or lessee that any information, which is of special interest, should be obtained through independent verification. ALL MEASUREMENTS ARE APPROXIMATE.