

11815-11829 JOSEPH CAMPAU AVE
HAMTRAMCK, MI 48212



2,800 ± SF
AVAILABLE



3,000 ± SF
AVAILABLE

Retail Opportunity
2,800 and 3,000 ± SF

FOR LEASE

PROPERTY HIGHLIGHTS



Description

Approximately 2,800 ± SF and 3,000 ± SF of retail space available in Hamtramck's central business district. This property is located on Joseph Campau Ave between Carpenter Ave and Caniff Street. Ample parking adjacent to the property in a densely populated area of Hamtramck, MI.

Address

11815-11829 Joseph Campau Ave
Hamtramck, MI 48212

Features

- 2,800 ± SF and 3,000 ± SF
- Zoned CBD- Central Business District
- Parking lot next to property and streetside parking available
- Densely populated area
- Built in 1987

Gross Rent

2,800 SF - \$2,400/month + utilities
3,000 SF - \$2,500/month + utilities

Traffic Counts

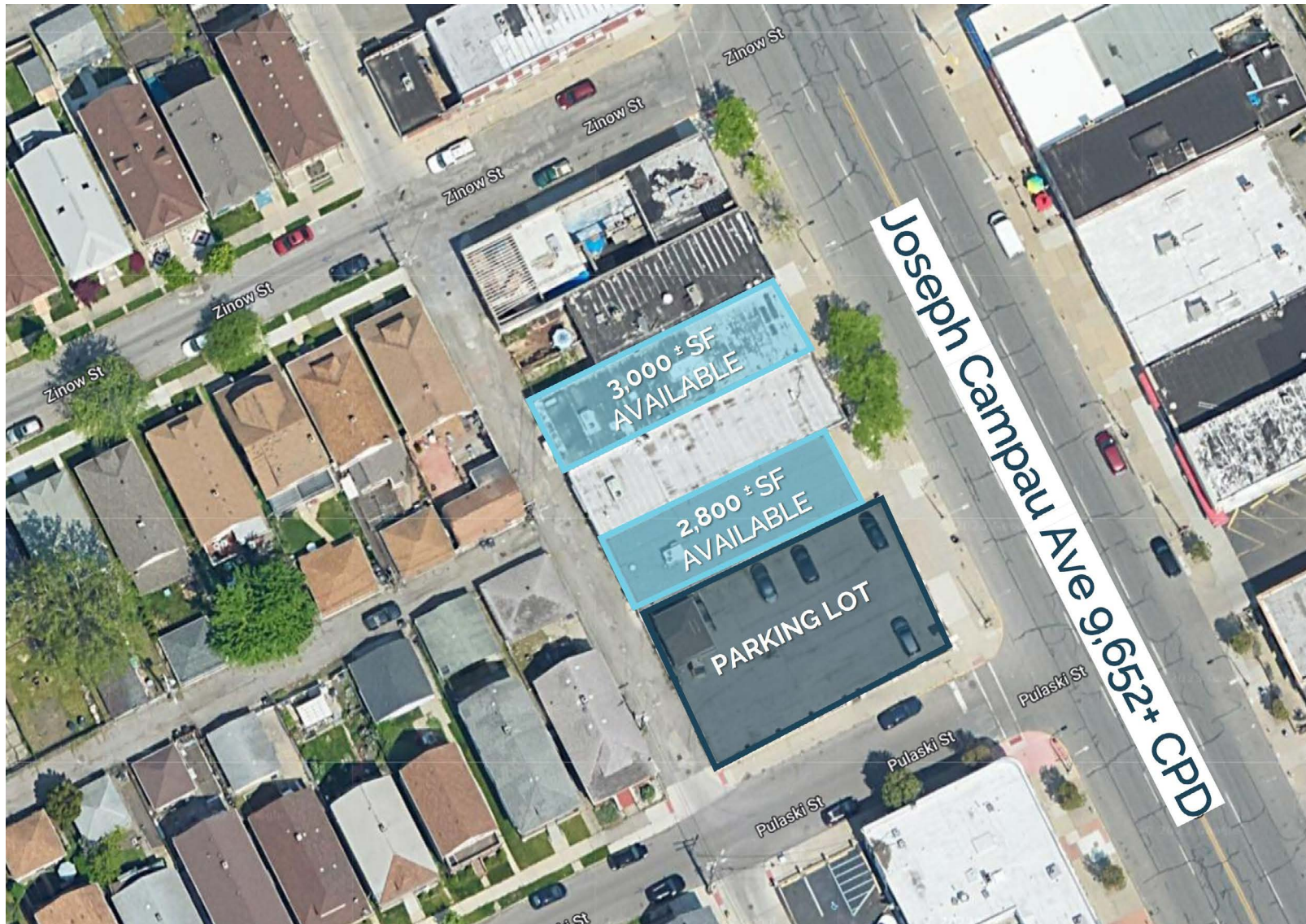
Joseph Campau Ave - 9,652+ cpd
Conant Street - 6,997+ cpd
Caniff Street - 7,870+ cpd

Demographics

	1 MILE	3 MILES	5 MILES
POPULATION:	32,660	114,753	344,545
HOUSEHOLDS:	9,709	43,503	141,606
AVG. HOUSEHOLD INCOME:	\$51,000	\$51,031	\$57,301
DAYTIME POPULATION:	19,698	93,932	291,700

The information contained herein has been obtained through sources deemed reliable by On Q Commercial Real Estate but cannot be guaranteed for its accuracy. We recommend to the buyer or lessee that any information, which is of special interest, should be obtained through independent verification. ALL MEASUREMENTS ARE APPROXIMATE.

MICRO AERIAL



The information contained herein has been obtained through sources deemed reliable by On Q Commercial Real Estate but cannot be guaranteed for its accuracy. We recommend to the buyer or lessee that any information, which is of special interest, should be obtained through independent verification. ALL MEASUREMENTS ARE APPROXIMATE.



OnQ
COMMERCIAL
REAL ESTATE

JOE QONJA

Listing Contact

C: (248) 977-7799

O: (248) 712-3300

E: joe@onqcre.com

LEO ALLUS

Listing Contact

C: (248) 321-3325

O: (248) 712-3300

E: leo@onqcre.com

100 W. Long Lake Rd. Suite 122 Bloomfield Hills, MI 48304

www.onqcre.com

The information contained herein has been obtained through sources deemed reliable by On Q Commercial Real Estate but cannot be guaranteed for its accuracy. We recommend to the buyer or lessee that any information, which is of special interest, should be obtained through independent verification. ALL MEASUREMENTS ARE APPROXIMATE.