

# MILESTONE PLAZA

22260 Hall Road  
Clinton Township, MI 48036



**Retail Opportunity**  
*up to 2,800 ± SF*

**FOR LEASE**

# PROPERTY HIGHLIGHTS



## Description

Join Biggby Coffee in this site plan approved retail development slated to start construction in late 2025. Up to 2,800 ± SF available at the southeast corner of Hall Rd. and Elizabeth Rd. at a signalized intersection in Clinton Township, Michigan. With strong demographics and positioning on the heavily traveled Hall Rd., this is an ideal opportunity for businesses serving the local community.

## Address

22260 Hall Road  
Clinton Township, MI 48036

## Features

- **Up to 2,800 ± SF of Retail Space**
- **Zoned B3 - General Business**
- **Monument Signage Available**
- **Ample Access & Visibility**
- **High Traffic Counts**

## Asking Rent

Contact Broker

## Traffic Counts

Hall Road Eastbound - 34,278+ cpd  
Hall Road Westbound - 33,912+ cpd  
Elizabeth Road - 12,151+ cpd

## Demographics

	1 MILE	3 MILES	5 MILES
POPULATION:	8,609	77,011	204,586
HOUSEHOLDS:	3,396	31,440	87,456
AVG. HOUSEHOLD INCOME:	\$90,568	\$111,319	\$106,308
DAYTIME POPULATION:	8,885	57,345	135,299

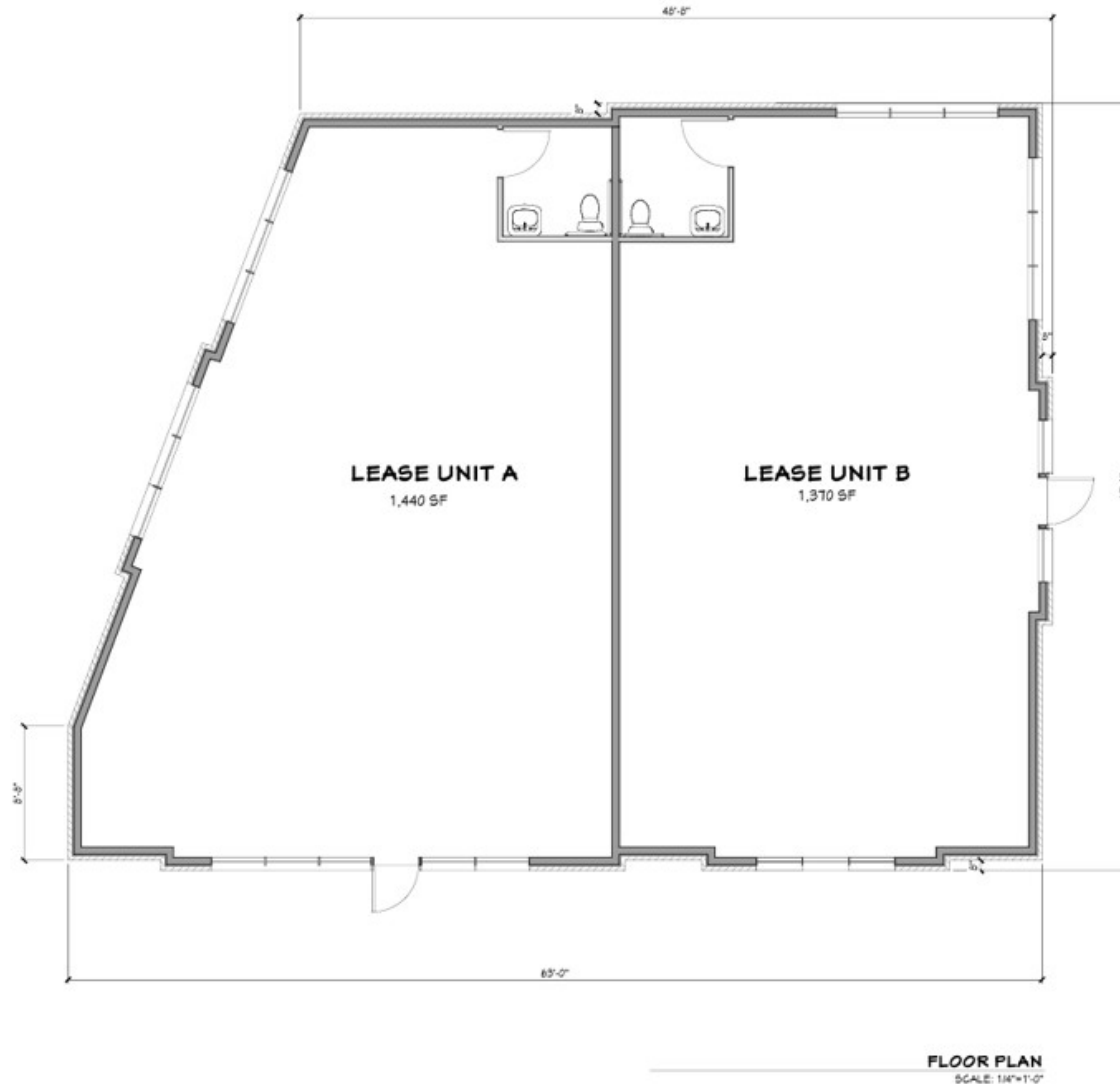
The information contained herein has been obtained through sources deemed reliable by On Q Commercial Real Estate but cannot be guaranteed for its accuracy. We recommend to the buyer or lessee that any information, which is of special interest, should be obtained through independent verification. ALL MEASUREMENTS ARE APPROXIMATE.

# APPROVED SITE PLAN



The information contained herein has been obtained through sources deemed reliable by On Q Commercial Real Estate but cannot be guaranteed for its accuracy. We recommend to the buyer or lessee that any information, which is of special interest, should be obtained through independent verification. ALL MEASUREMENTS ARE APPROXIMATE.

# PROPOSED FLOOR PLAN



The information contained herein has been obtained through sources deemed reliable by On Q Commercial Real Estate but cannot be guaranteed for its accuracy. We recommend to the buyer or lessee that any information, which is of special interest, should be obtained through independent verification. ALL MEASUREMENTS ARE APPROXIMATE.

# MICRO AERIAL

*Including traffic counts*



The information contained herein has been obtained through sources deemed reliable by On Q Commercial Real Estate but cannot be guaranteed for its accuracy. We recommend to the buyer or lessee that any information, which is of special interest, should be obtained through independent verification. ALL MEASUREMENTS ARE APPROXIMATE.

# MACRO AERIAL



The information contained herein has been obtained through sources deemed reliable by On Q Commercial Real Estate but cannot be guaranteed for its accuracy. We recommend to the buyer or lessee that any information, which is of special interest, should be obtained through independent verification. ALL MEASUREMENTS ARE APPROXIMATE.



OnQ  
COMMERCIAL  
REAL ESTATE

**JOE QONJA**

Principal Broker

C: (248) 977-7799

O: (248) 712-3300

E: [joe@onqcre.com](mailto:joe@onqcre.com)

**LEO ALLUS**

Associate

C: (248) 321-3325

O: (248) 712-3300

E: [leo@onqcre.com](mailto:leo@onqcre.com)

100 W. Long Lake Rd. Suite 122 Bloomfield Hills, MI 48304

**[www.onqcre.com](http://www.onqcre.com)**

The information contained herein has been obtained through sources deemed reliable by On Q Commercial Real Estate but cannot be guaranteed for its accuracy. We recommend to the buyer or lessee that any information, which is of special interest, should be obtained through independent verification. ALL MEASUREMENTS ARE APPROXIMATE.