

PROPOSED DRIVE-THRU

22260 Hall Road
Clinton Township, MI 48036



OnQ
COMMERCIAL
REAL ESTATE



Proposed Drive-Thru Opportunity

2,250 ± SF

FOR LEASE

PROPERTY HIGHLIGHTS



Description

Approximately 2,250 ± SF proposed drive-thru available along heavily traveled Hall Rd. in Clinton Township. This property is located at the southeast corner of Hall Rd. and Elizabeth Rd. at a signalized intersection in Clinton Township, Michigan. Elizabeth Rd. provides the location an additional 15,000 vehicles on top of the Hall Road combined traffic counts of 69,225 vehicles per day.

Address

22260 Hall Road
Clinton Township, MI 48036

Features

- Proposed drive-thru
- 2,250 ± SF of retail space
- Zoned B2- Community Business
- Pylon signage available
- Ample access and visibility
- High traffic counts

Asking Rent

Contact Broker

Traffic Counts

Hall Road Eastbound - 35,311+ cpd
Hall Road Westbound - 33,914+ cpd
Elizabeth Road - 15,626+ cpd

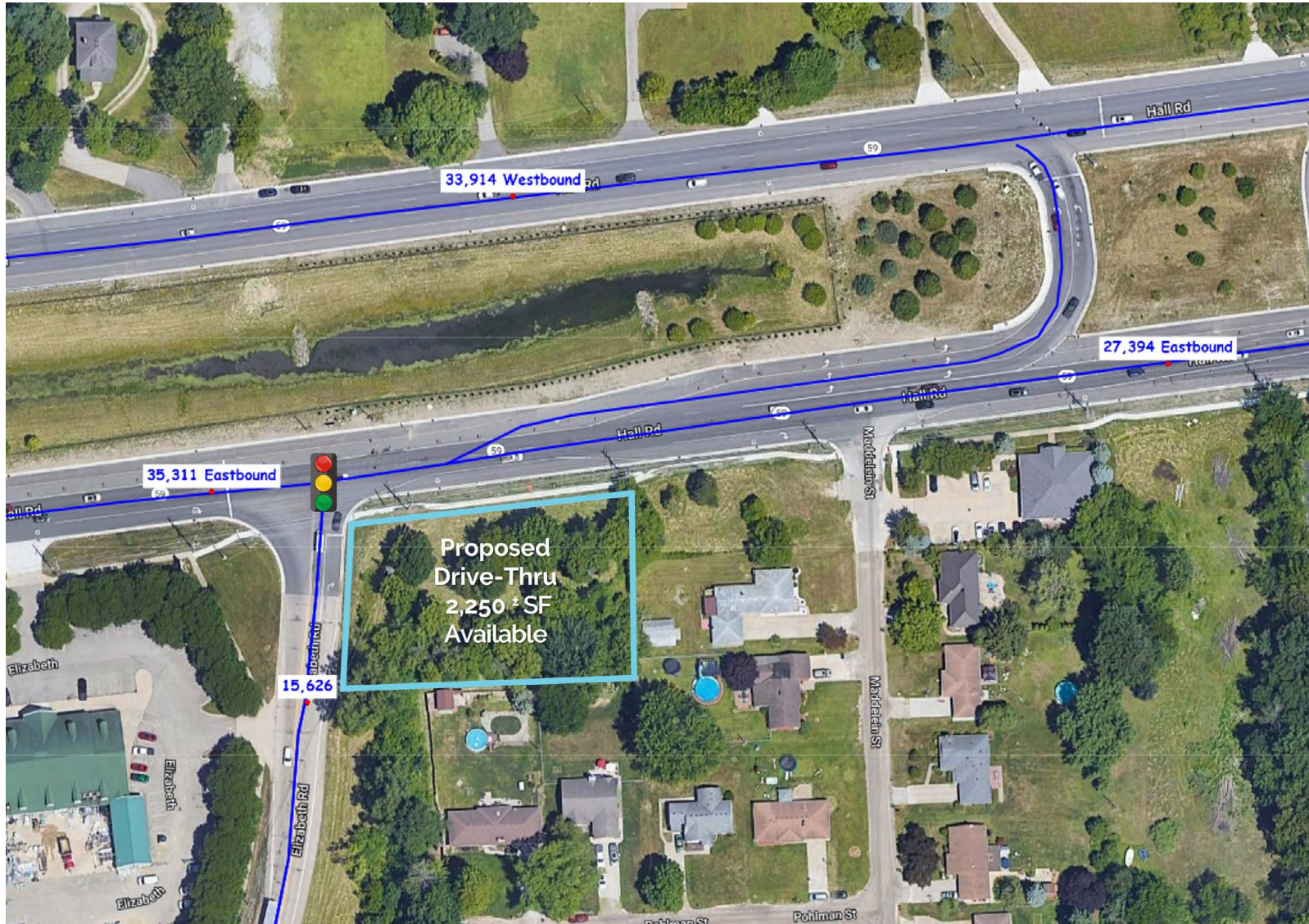
Demographics

	1 MILE	3 MILES	5 MILES
POPULATION:	8,609	77,011	204,586
HOUSEHOLDS:	3,396	31,440	87,456
AVG. HOUSEHOLD INCOME:	\$90,568	\$111,319	\$106,308
DAYTIME POPULATION:	8,885	57,345	135,299

The information contained herein has been obtained through sources deemed reliable by On Q Commercial Real Estate but cannot be guaranteed for its accuracy. We recommend to the buyer or lessee that any information, which is of special interest, should be obtained through independent verification. ALL MEASUREMENTS ARE APPROXIMATE.

MICRO AERIAL

Including traffic counts



The information contained herein has been obtained through sources deemed reliable by On Q Commercial Real Estate but cannot be guaranteed for its accuracy. We recommend to the buyer or lessee that any information, which is of special interest, should be obtained through independent verification. ALL MEASUREMENTS ARE APPROXIMATE.

MACRO AERIAL



The information contained herein has been obtained through sources deemed reliable by On Q Commercial Real Estate but cannot be guaranteed for its accuracy. We recommend to the buyer or lessee that any information, which is of special interest, should be obtained through independent verification. ALL MEASUREMENTS ARE APPROXIMATE.



OnQ
COMMERCIAL
REAL ESTATE

JOE QONJA

Listing Contact

C: (248) 977-7799

O: (248) 712-3300

E: joe@onqcre.com

LEO ALLUS

Listing Contact

C: (248) 321-3325

O: (248) 712-3300

E: leo@onqcre.com

100 W. Long Lake Rd. Suite 122 Bloomfield Hills, MI 48304

www.onqcre.com

The information contained herein has been obtained through sources deemed reliable by On Q Commercial Real Estate but cannot be guaranteed for its accuracy. We recommend to the buyer or lessee that any information, which is of special interest, should be obtained through independent verification. ALL MEASUREMENTS ARE APPROXIMATE.