

# HIGHLAND TOWN CENTER

*Former Urgent Care*

2780-2786 & 2844-2868 E Highland Rd  
Highland Charter Twp., MI 48356



Join Ace Hardware, Rite Aid, Subway and more in this neighborhood shopping center along heavily traveled Highland Road (M-59). Last space available in this center servicing the Highland Township, White Lake and Milford communities.



**Retail Opportunity**  
2,566 ± SF

**FOR LEASE**

## Description

Join Ace Hardware, Rite Aid, Subway and more in the Highland Town Center located at the corner of Highland Rd (M-59) and Duck Lake Rd in Highland Charter Township. 2,566 ± SF of retail space available next to Subway.

## Address

2780-2786 & 2844-2868 E Highland Rd.  
Highland Charter Twp., MI 48356

## Features

- Fully built-out former Urgent Care space
- 2,566 ± SF of retail/medical space
- Ample parking and great road visibility
- Last space available
- Strong traffic counts
- Pylon signage available

## Asking Rent

\$15/SF plus NNN

## Traffic Counts

Highland Rd (M-59) - 56,097+ cpd  
Duck Lake Road - 15,720+ cpd

## Demographics

	3 MILE	5 MILES	7 MILES
POPULATION:	20,116	50,588	95,048
HOUSEHOLDS:	7,666	19,112	36,316
AVG. HOUSEHOLD INCOME:	\$115,164	\$145,051	\$140,679
DAYTIME POPULATION:	8,970	24,910	46,274

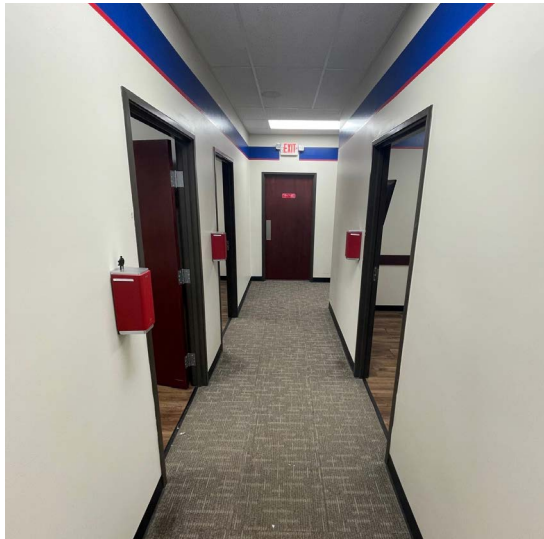
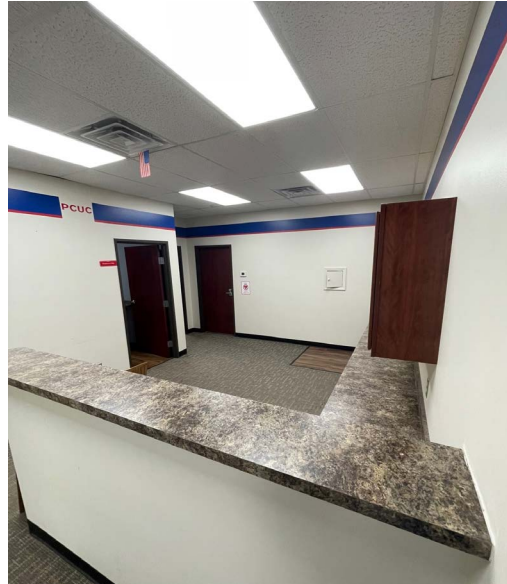
# AERIAL



The information contained herein has been obtained through sources deemed reliable by On Q Commercial Real Estate but cannot be guaranteed for its accuracy. We recommend to the buyer or lessee that any information, which is of special interest, should be obtained through independent verification. ALL MEASUREMENTS ARE APPROXIMATE.

# Former Urgent Care Space

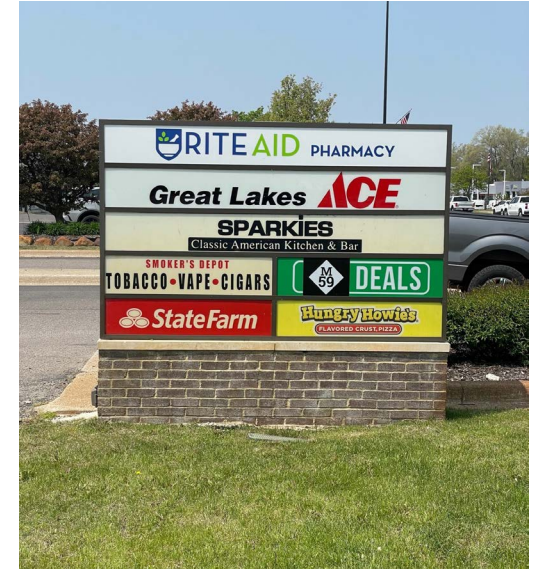
2,566 ± SF



PHOTOS

HIGHLAND TOWN CENTER

The information contained herein has been obtained through sources deemed reliable by On Q Commercial Real Estate but cannot be guaranteed for its accuracy. We recommend to the buyer or lessee that any information, which is of special interest, should be obtained through independent verification. ALL MEASUREMENTS ARE APPROXIMATE.



The information contained herein has been obtained through sources deemed reliable by On Q Commercial Real Estate but cannot be guaranteed for its accuracy. We recommend to the buyer or lessee that any information, which is of special interest, should be obtained through independent verification. ALL MEASUREMENTS ARE APPROXIMATE.



OnQ  
COMMERCIAL  
REAL ESTATE

**JOE QONJA**

Listing Contact

C: (248) 977-7799

O: (248) 712-3300

E: [joe@onqcre.com](mailto:joe@onqcre.com)

**LEO ALLUS**

Listing Contact

C: (248) 321-3325

O: (248) 712-3300

E: [leo@onqcre.com](mailto:leo@onqcre.com)

100 W. Long Lake Rd. Suite 122 Bloomfield Hills, MI 48304

**[www.onqcre.com](http://www.onqcre.com)**

The information contained herein has been obtained through sources deemed reliable by On Q Commercial Real Estate but cannot be guaranteed for its accuracy. We recommend to the buyer or lessee that any information, which is of special interest, should be obtained through independent verification. ALL MEASUREMENTS ARE APPROXIMATE.