

WESTVIEW PLAZA



6006-6144 N. Wayne Rd.
Westland, MI 48185



RETAIL/OFFICE OPPORTUNITY

FOR LEASE

WESTVIEW PLAZA



Address

6006-6144 N. Wayne Rd.
Westland, MI 48185

Availability

1,600 ± SF Available

Asking Rent

\$14/SF plus NNN

Features

- ✓ Built in 1979
- ✓ Zoning: CB - 3 (General Business)
- ✓ Asphalt Paved - 228 parking spaces
- ✓ Frontage: Stacy Ave 710', Wayne Rd 673'

Demographics

	1 MILE	3 MILES	5 MILES
POPULATION:	13,213	115,101	276,935
HOUSEHOLDS:	6,670	50,235	115,076
AVG. HOUSEHOLD INCOME:	\$55,959	\$69,680	\$76,498
DAYTIME POPULATION:	11,576	66,070	209,312

Traffic Counts

28,890 AADT on Wayne Rd
43,883 AADT on Ford Rd

Co-Tenants



The information contained herein has been obtained through sources deemed reliable by On Q Commercial Real Estate but cannot be guaranteed for its accuracy. We recommend to the buyer or lessee that any information, which is of special interest, should be obtained through independent verification. ALL MEASUREMENTS ARE APPROXIMATE.

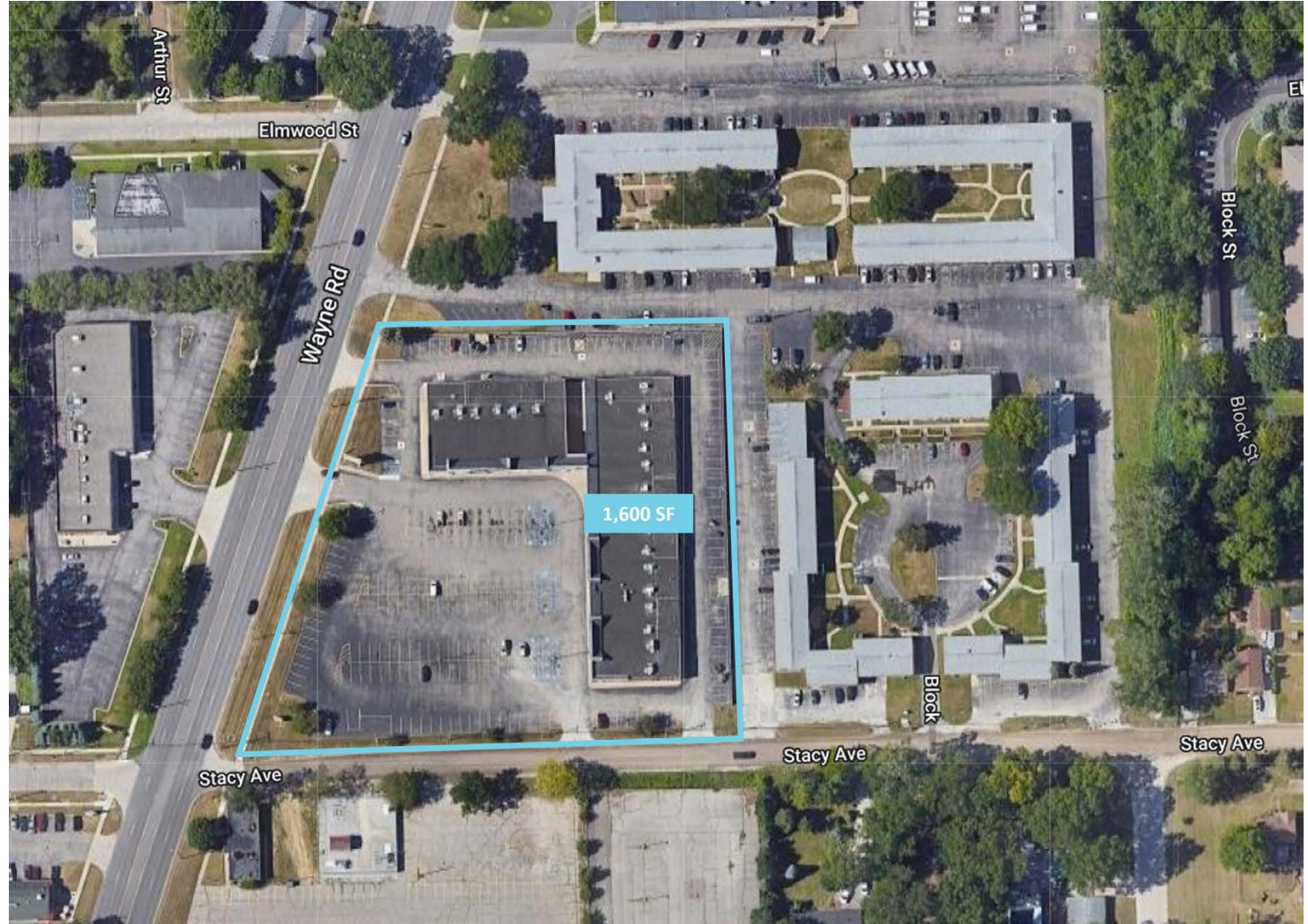
SITE PLAN
WESTVIEW PLAZA



The information contained herein has been obtained through sources deemed reliable by On Q Commercial Real Estate but cannot be guaranteed for its accuracy. We recommend to the buyer or lessee that any information, which is of special interest, should be obtained through independent verification. ALL MEASUREMENTS ARE APPROXIMATE.

AERIAL PLAN

WESTVIEW PLAZA



The information contained herein has been obtained through sources deemed reliable by On Q Commercial Real Estate but cannot be guaranteed for its accuracy. We recommend to the buyer or lessee that any information, which is of special interest, should be obtained through independent verification. ALL MEASUREMENTS ARE APPROXIMATE.

PHOTOS
WESTVIEW PLAZA



The information contained herein has been obtained through sources deemed reliable by On Q Commercial Real Estate but cannot be guaranteed for its accuracy. We recommend to the buyer or lessee that any information, which is of special interest, should be obtained through independent verification. ALL MEASUREMENTS ARE APPROXIMATE.



OnQ
COMMERCIAL
REAL ESTATE

JOE QONJA

Listing Contact

C: (248) 977-7799

O: (248) 712-3300

E: joe@onqcre.com

LEO ALLUS

Listing Contact

C: (248) 321-3325

O: (248) 712-3300

E: leo@onqcre.com

100 W. Long Lake Rd. Suite 122 Bloomfield Hills, MI 48304

www.onqcre.com

The information contained herein has been obtained through sources deemed reliable by On Q Commercial Real Estate but cannot be guaranteed for its accuracy. We recommend to the buyer or lessee that any information, which is of special interest, should be obtained through independent verification. ALL MEASUREMENTS ARE APPROXIMATE.